

Product datasheet for TP317186L

HELB (NM_033647) Human Recombinant Protein

Product data:

Product Type: Recombinant Proteins
Description: Recombinant protein of human helicase (DNA) B (HELB), 1 mg
Species: Human
Expression Host: HEK293T
Expression cDNA Clone or AA Sequence: >RC217186 representing NM_033647
Red=Cloning site Green=Tags(s)

MARSSPYLRQLQGPELLPPRDLVEEDDDYLNDDEVEEDESVIDAEELCSGGVKAGSLPGCLRVSIDENT
 QETCKVFGFRPITGAWWRVKVQVKPVVGSRSYQYQVQGFPSYFLQSDMSPPNQKHICALFLKECEVSSDD
 VNKFLTWWKEVSNYKNLNFENLRETLRTHFKETGRKDQKQPTQNGQEELFLDNEMSLPLENTIPFRNVMT
 ALQFPKIMEFLPVLLPRHFKWIIIGSGSKEMLKEIEEILGTHPWKLGFSKITYREWKLRLRCEASWIAFCQC
 ESSLQLMTDLEKNALIMYSRLKQICREDGHTYEVNDLTLTSLNHMSFHAASESLKFLKDIGVVTYEKSC
 VFPYDLYHAERIAAFSICDLMKKPPWHLCVDVEKVLASIHHTTKPENSSDDALNESKPDEVRLNPVDVVD
 TQDNGDHIWTNGENEINAEISEVQLDQDQVEVPLDRDQVAALEMICSNPVTVISGKGGCGKTTIVSRLFK
 HIEQLEEREVKKACEDFEQDQNASEEWITFTEQSLEADKAIEVLLTAPTGAAGLLRQKTGLHAYTLCQ
 VNYSFYSWTQTMMTTNKPWKFSSVRVLVWDEGSLVSVGIFKSVLNLCEHSKLSKLIILGDIRQLPSIEP
 GNLLKDLFETLKSRCNAIELKTNHRAESQLIVDNATRISRQFPKFDALNIDNPTLPISIQDKTFIFV
 RLPEEDASSQSSKTNHHSCLYSAVKTLQENNLQNAKTSQFIARFRQDCDLINDCCCKHYTGHLTKDHQS
 RLVFGIGDKICCTRNYLSDLLPENISGSQQNNDLDASSEDVSGTLPDFAKNKRDFESNVRLCNGEIFFI
 TNDVTDVTFGKRRSLTINMAGLEVTVDFKMKYCRIKHAWARTIHTFQGSSEEQTVVYVVGKAGRQHWQ
 HVYTAVTRGRCRVYVIAEESQLRNAIMKNSFPRKTRKHFQSKLSSSGAPPADFLSPRKSSGSDSGGPSI
 PSASPLPVTDHAMTNDVTWSEASSPDERTLTFAERWQLSSPDGVDTDDDLPKSRASKRTCGVNDDESPS
 KIFMVGESPVSSRLQNLRLNLIPLRQLFKPTDNQET

TRTRPLEQKLISEEDLAANDILDYKDDDDKV

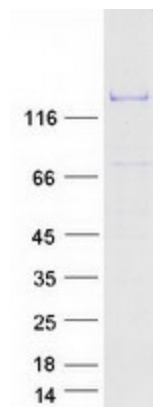
Tag: C-Myc/DDK
Predicted MW: 123.1 kDa
Concentration: >0.05 µg/µL as determined by microplate BCA method
Purity: > 80% as determined by SDS-PAGE and Coomassie blue staining
Buffer: 25 mM Tris-HCl, 100 mM glycine, pH 7.3, 10% glycerol



[View online »](#)

Preparation:	Recombinant protein was captured through anti-DDK affinity column followed by conventional chromatography steps.
Note:	For testing in cell culture applications, please filter before use. Note that you may experience some loss of protein during the filtration process.
Storage:	Store at -80°C.
Stability:	Stable for 12 months from the date of receipt of the product under proper storage and handling conditions. Avoid repeated freeze-thaw cycles.
RefSeq:	NP_387467
Locus ID:	92797
UniProt ID:	Q8NG08
RefSeq Size:	3368
Cytogenetics:	12q
RefSeq ORF:	3261
Synonyms:	DHB; hDHB
Summary:	This gene encodes a DNA-dependent ATPase which catalyzes the unwinding of DNA necessary for DNA replication, repair, recombination, and transcription. This gene is thought to function specifically during the S phase entry of the cell cycle. Alternative splicing results in multiple transcript variants. [provided by RefSeq, Feb 2016]

Product images:



Coomassie blue staining of purified HELB protein (Cat# [TP317186]). The protein was produced from HEK293T cells transfected with HELB cDNA clone (Cat# [RC217186]) using MegaTran 2.0 (Cat# [TT210002]).