

Product datasheet for **TP317172M**

M-CSF (CSF1) (NM_172211) Human Recombinant Protein

Product data:

Product Type:	Recombinant Proteins
Description:	Recombinant protein of human colony stimulating factor 1 (macrophage) (CSF1), transcript variant 3, 100 µg
Species:	Human
Expression Host:	HEK293T
Expression cDNA Clone or AA Sequence:	>RC217172 representing NM_172211 Red =Cloning site Green =Tags(s)
	<p>MTAPGAAGRCPPTTWLGSLLLLVCLLASRSITEEVSEYCSHMIGSGHLQSLQRLIDSQMETSCQITFEFV DQEQLKDPVCYLKKAFLVQDIMEDTMRFRDNTNPNAIAIVQLQELSLRLKSCFTKDYEEDKACVRTFYE TPLQLLEKVKNFNETKNLLDKDWNIFSKNCNNSFAECSSQGHERQSEGSSSPQLQESVFHLLVPSVILV LLAVGGLLFYRWRRRSHQEPQRADSPLEQPEGSPLTQDDRQVELPV</p> <p>TRTRPLEQKLISEEDLAANDILDYKDDDDKV</p>
Tag:	C-Myc/DDK
Predicted MW:	29 kDa
Concentration:	>0.05 µg/µL as determined by microplate BCA method
Purity:	> 80% as determined by SDS-PAGE and Coomassie blue staining
Buffer:	25 mM Tris-HCl, 100 mM glycine, pH 7.3, 10% glycerol
Preparation:	Recombinant protein was captured through anti-DDK affinity column followed by conventional chromatography steps.
Note:	For testing in cell culture applications, please filter before use. Note that you may experience some loss of protein during the filtration process.
Storage:	Store at -80°C.
Stability:	Stable for 12 months from the date of receipt of the product under proper storage and handling conditions. Avoid repeated freeze-thaw cycles.
RefSeq:	<u>NP_757350</u>
Locus ID:	1435



[View online »](#)

UniProt ID: [P09603](#)

RefSeq Size: 1855

Cytogenetics: 1p13.3

RefSeq ORF: 768

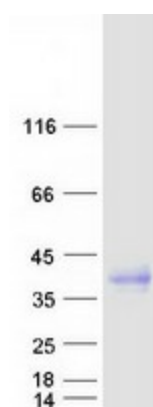
Synonyms: CSF-1; MCSF

Summary: The protein encoded by this gene is a cytokine that controls the production, differentiation, and function of macrophages. The active form of the protein is found extracellularly as a disulfide-linked homodimer, and is thought to be produced by proteolytic cleavage of membrane-bound precursors. The encoded protein may be involved in development of the placenta. Alternate splicing results in multiple transcript variants. [provided by RefSeq, Sep 2011]

Protein Families: Druggable Genome, ES Cell Differentiation/IPS, Secreted Protein, Transmembrane

Protein Pathways: Cytokine-cytokine receptor interaction, Hematopoietic cell lineage

Product images:



Coomassie blue staining of purified CSF1 protein (Cat# [TP317172]). The protein was produced from HEK293T cells transfected with CSF1 cDNA clone (Cat# [RC217172]) using MegaTran 2.0 (Cat# [TT210002]).