

Product datasheet for **TP317163L**

MFGE8 (NM_005928) Human Recombinant Protein

Product data:

Product Type:	Recombinant Proteins
Description:	Recombinant protein of human milk fat globule-EGF factor 8 protein (MFGE8), transcript variant 1, 1 mg
Species:	Human
Expression Host:	HEK293T
Expression cDNA Clone or AA Sequence:	>RC217163 representing NM_005928 Red =Cloning site Green =Tags(s)

MPRPRLAALCGALLCAPSLLVALDICKSKNPCHNGGLCEEISQEVRGDVFPSYTCTCLKGYAGNHCETKC
VEPLGLENGNIANSQIAASSVRVTFGLQHWVPELARLNLRAGMVNAWTPSSNDDNPWIQVNLRRMWVTG
VVTQGASRLASHEYLKAFKVAYSLNGHEFDIFIHDVNNKKHKEFVGNWNKNAVHVNLFETPVEAQYVRLYPT
SCHTACTLRFELLGCELNGCANPLGLKNNSIPDKQITASSSYKTWGLHLFSWNPSYARLDKQGNFNAWVA
GSYGNDQWLQVDLGSSEKVTGIITQGARNFGSVQFVASYKVAYSNDSANWTEYQDPRTGSSKIFPGNWDN
HSHKKNLFETPILARYVRILPVAWHNRALRLELLGC

TRTRPLEQKLISEEDLAANDILDYKDDDDKV

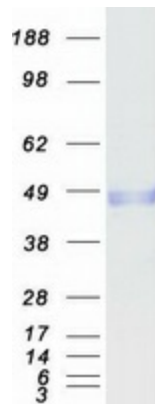
Tag:	C-Myc/DDK
Predicted MW:	42.9 kDa
Concentration:	>0.05 µg/µL as determined by microplate BCA method
Purity:	> 80% as determined by SDS-PAGE and Coomassie blue staining
Buffer:	25 mM Tris-HCl, 100 mM glycine, pH 7.3, 10% glycerol
Preparation:	Recombinant protein was captured through anti-DDK affinity column followed by conventional chromatography steps.
Note:	For testing in cell culture applications, please filter before use. Note that you may experience some loss of protein during the filtration process.
Storage:	Store at -80°C.
Stability:	Stable for 12 months from the date of receipt of the product under proper storage and handling conditions. Avoid repeated freeze-thaw cycles.
RefSeq:	NP_005919



[View online »](#)

Locus ID:	4240
UniProt ID:	Q08431
RefSeq Size:	1934
Cytogenetics:	15q26.1
RefSeq ORF:	1161
Synonyms:	BA46; EDIL1; HMFG; hP47; HsT19888; MFG-E8; MFGM; OAcGD3S; SED1; SPAG10
Summary:	This gene encodes a preproprotein that is proteolytically processed to form multiple protein products. The major encoded protein product, lactadherin, is a membrane glycoprotein that promotes phagocytosis of apoptotic cells. This protein has also been implicated in wound healing, autoimmune disease, and cancer. Lactadherin can be further processed to form a smaller cleavage product, medin, which comprises the major protein component of aortic medial amyloid (AMA). Alternative splicing results in multiple transcript variants. [provided by RefSeq, Jul 2015]

Product images:



Coomassie blue staining of purified MFGE8 protein (Cat# [TP317163]). The protein was produced from HEK293T cells transfected with MFGE8 cDNA clone (Cat# [RC217163]) using MegaTran 2.0 (Cat# [TT210002]).