

Product datasheet for **TP317106L**

ELOF1 (NM_032377) Human Recombinant Protein

Product data:

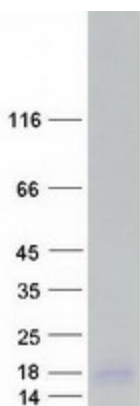
Product Type:	Recombinant Proteins
Description:	Recombinant protein of human elongation factor 1 homolog (S. cerevisiae) (ELOF1), 1 mg
Species:	Human
Expression Host:	HEK293T
Expression cDNA Clone or AA Sequence:	>RC217106 representing NM_032377 Red =Cloning site Green =Tags(s)
	MGRRKSKRKPPPKKKMTGTLETQFTCPFCNHEKSCDVKMDRARNTGVISCTVCLEEFQTPITYLSEPV YSDWIDACEAANQ
	TRTRPLEQKLISEEDLAANDILDYKDDDDKV
Tag:	C-Myc/DDK
Predicted MW:	9.3 kDa
Concentration:	>0.05 µg/µL as determined by microplate BCA method
Purity:	> 80% as determined by SDS-PAGE and Coomassie blue staining
Buffer:	25 mM Tris-HCl, 100 mM glycine, pH 7.3, 10% glycerol
Preparation:	Recombinant protein was captured through anti-DDK affinity column followed by conventional chromatography steps.
Note:	For testing in cell culture applications, please filter before use. Note that you may experience some loss of protein during the filtration process.
Storage:	Store at -80°C.
Stability:	Stable for 12 months from the date of receipt of the product under proper storage and handling conditions. Avoid repeated freeze-thaw cycles.
RefSeq:	NP_115753
Locus ID:	84337
UniProt ID:	P60002
RefSeq Size:	982
Cytogenetics:	19p13.2



[View online »](#)

RefSeq ORF:	249
Synonyms:	ELF1
Summary:	Transcription elongation factor implicated in the maintenance of proper chromatin structure in actively transcribed regions.[UniProtKB/Swiss-Prot Function]

Product images:



Coomassie blue staining of purified ELOF1 protein (Cat# [TP317106]). The protein was produced from HEK293T cells transfected with ELOF1 cDNA clone (Cat# [RC217106]) using MegaTran 2.0 (Cat# [TT210002]).