

## Product datasheet for **TP317104L**

### M-CSF (CSF1) (NM\_000757) Human Recombinant Protein

#### Product data:

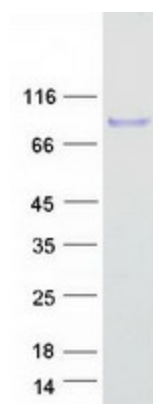
Product Type:	Recombinant Proteins
Description:	Recombinant protein of human colony stimulating factor 1 (macrophage) (CSF1), transcript variant 1, 1 mg
Species:	Human
Expression Host:	HEK293T
Expression cDNA Clone or AA Sequence:	>RC217104 protein sequence <b>Red</b> =Cloning site <b>Green</b> =Tags(s)
	<p>MTAPGAAGRCPPPTTWLGSLLLLVCLLASRSITEEVSEYCSHMIGSGHLQSLQRLIDSQMETSCQITFEFV DQEQLKDPVCYLKKAFLLVQDIMEDTMRFRDNTNPNAIAIVQLQELSLRLKSCFTKDYEEDKACVRTFYE TPLQLLEKVKNVFNETKNLLDKDWNIFSKNCNNSFAECSSQDVVTKPDCNCLYPKAISSDPASVSPHQ LAPSMAPVAGLTWEDSEGTEGSSLLPGEQPLHTVDPGSAKQRPPRSTCQSFPEPETPVVKDSTIGGSPQP RPSVGAFNPGMEDILDSAMGTNWWPEEASGEASEIPVPQGTELSPSRPGGGSMQTEPARPSNFLSASSPL PASAKGQQPADVTGTALPRVGPVVRPTGQDWNHTPQKTDHPSALLRDPPEPGSPRISSLRPQGLSNPSTLS AQPQLSRSHSSGSVLPLGELEGRRSTRDRRSPAEPGGPASEGAARPLPRFNSVPLTDTGHERQSEGSSS PQLQESVFHLLVPSVILVLLAVGGLLFYRWRRRSHQEPQRADSPLEQPEGSPLTQDDRQVELPV</p> <p><b>TRTRPLEQKLISEEDLAANDILDYKDDDDKV</b></p>
Tag:	C-Myc/DDK
Predicted MW:	59.9 kDa
Concentration:	>0.05 µg/µL as determined by microplate BCA method
Purity:	> 80% as determined by SDS-PAGE and Coomassie blue staining
Buffer:	25 mM Tris-HCl, 100 mM glycine, pH 7.3, 10% glycerol
Preparation:	Recombinant protein was captured through anti-DDK affinity column followed by conventional chromatography steps.
Note:	For testing in cell culture applications, please filter before use. Note that you may experience some loss of protein during the filtration process.
Storage:	Store at -80°C.



[View online »](#)

<b>Stability:</b>	Stable for 12 months from the date of receipt of the product under proper storage and handling conditions. Avoid repeated freeze-thaw cycles.
<b>RefSeq:</b>	<a href="#">NP_000748</a>
<b>Locus ID:</b>	1435
<b>UniProt ID:</b>	<a href="#">P09603</a> , <a href="#">A0A024R0A1</a>
<b>RefSeq Size:</b>	4249
<b>Cytogenetics:</b>	1p13.3
<b>RefSeq ORF:</b>	1662
<b>Synonyms:</b>	CSF-1; MCSF
<b>Summary:</b>	The protein encoded by this gene is a cytokine that controls the production, differentiation, and function of macrophages. The active form of the protein is found extracellularly as a disulfide-linked homodimer, and is thought to be produced by proteolytic cleavage of membrane-bound precursors. The encoded protein may be involved in development of the placenta. Alternate splicing results in multiple transcript variants. [provided by RefSeq, Sep 2011]
<b>Protein Families:</b>	Druggable Genome, ES Cell Differentiation/IPS, Secreted Protein, Transmembrane
<b>Protein Pathways:</b>	Cytokine-cytokine receptor interaction, Hematopoietic cell lineage

### Product images:



Coomassie blue staining of purified CSF1 protein (Cat# [TP317104]). The protein was produced from HEK293T cells transfected with CSF1 cDNA clone (Cat# [RC217104]) using MegaTran 2.0 (Cat# [TT210002]).