

## Product datasheet for TP317067

### LY6G6F (NM\_001003693) Human Recombinant Protein

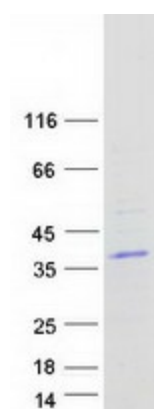
#### Product data:

Product Type:	Recombinant Proteins
Description:	Recombinant protein of human lymphocyte antigen 6 complex, locus G6F (LY6G6F), 20 µg
Species:	Human
Expression Host:	HEK293T
Expression cDNA Clone or AA Sequence:	>RC217067 representing NM_001003693 <span style="color: red;">Red</span> =Cloning site <span style="color: green;">Green</span> =Tags(s)  MAVLFLLLFLCGTPQAADNMQAIYVALGEAVELPCSPPTLHGDEHLSWFCSPAAGSFTTLVAQVQVGRP APDPGKPGRESRLRLGNYSWLEGSKEEDAGRYWCAVLGQHHNYQNWRVYDVLVLKGSQLSARAADG SP CNVLLCSVPSRRMDSVTWQEGKGPVRGRVQSFWGSEAALLVCPGEGLSEPRSRPRIIRCLMTHNKGV SFSLAASIDASPALCAPSTGWDMPWILMLLLTMGQGQVILALSIVLWRQVRGAPGRDASIPQFKPEIQV YENIHLARLGPPAHKPR  <span style="color: red;">TR</span> <span style="color: green;">TRPLEQKLISEEDLAANDILDYKDDDDKV</span>
Tag:	C-Myc/DDK
Predicted MW:	30.7 kDa
Concentration:	>0.05 µg/µL as determined by microplate BCA method
Purity:	> 80% as determined by SDS-PAGE and Coomassie blue staining
Buffer:	25 mM Tris-HCl, 100 mM glycine, pH 7.3, 10% glycerol
Preparation:	Recombinant protein was captured through anti-DDK affinity column followed by conventional chromatography steps.
Note:	For testing in cell culture applications, please filter before use. Note that you may experience some loss of protein during the filtration process.
Storage:	Store at -80°C.
Stability:	Stable for 12 months from the date of receipt of the product under proper storage and handling conditions. Avoid repeated freeze-thaw cycles.
RefSeq:	<u><a href="#">NP_001003693</a></u>
Locus ID:	259215


[View online »](#)

UniProt ID:	<u>Q5SQ64</u>
RefSeq Size:	898
Cytogenetics:	6p21.33
RefSeq ORF:	891
Synonyms:	C6orf21; G6f; LY6G6; LY6G6D; NG32
Summary:	The human G6f protein is a type I transmembrane protein belonging to the immunoglobulin (Ig) superfamily, which is comprised of cell-surface proteins involved in the immune system and cellular recognition (de Vet et al., 2003 [PubMed 12852788]).[supplied by OMIM, Mar 2008]
Protein Families:	Transmembrane

### Product images:



Coomassie blue staining of purified LY6G6F protein (Cat# TP317067). The protein was produced from HEK293T cells transfected with LY6G6F cDNA clone (Cat# [RC217067]) using MegaTran 2.0 (Cat# [TT210002]).