

## Product datasheet for **TP317059M**

### **CAMK2G (NM\_172173) Human Recombinant Protein**

#### **Product data:**

**Product Type:** Recombinant Proteins  
**Description:** Recombinant protein of human calcium/calmodulin-dependent protein kinase II gamma (CAMK2G), transcript variant 6, 100 µg

**Species:** Human

**Expression Host:** HEK293T

**Expression cDNA Clone or AA Sequence:** >RC217059 representing NM\_172173  
**Red**=Cloning site **Green**=Tags(s)

MATTATCTRFTDDYQLFEELGKGAFSWRRVCVKKTTSTQEYAAKIINTKKLSARDHQKLEREARICRLLKH  
PNIVRLHDSISEEGFHYLVFDLVTGGELFEDIVAREYYSEADASHCIHQILESVDNHHQHDIVHRDLKPE  
NLLASKCKGAAVKLADDFGLAIEVQGEQQAWFGFAGTPGYLSPEVLRKDPYGKPVDIWACGVILYILLVG  
YPPFWEDEDQHKLYQQIKAGAYDFPSPDWDTVTPEAKNLINQMLTINPAKRITADQALKHPWVCQRSTVAS  
MMHRQETVECLRKFNARRKLGAILTTMLVSRNFSAKSLNKKSDGGVKPQSNNKNSLEPQTTVHNAT  
DGIKGSTESCNTTTEDEDLKVRKQEIHKITEQLIEAINNGDFEAYTKICDPGLTSFEPEALGNLVEGMDF  
HKFYFENLLSKNSKPIHTTILNPHVHVIGEDAACIAYIRLTQYIDGQGRPRTSQSEETRVWHRRDGKWLN  
VHYHCSGAPAAPLQ

**TRTRPLEQKLISEEDLAANDILDYKDDDDKV**

**Tag:** C-Myc/DDK

**Predicted MW:** 56.8 kDa

**Concentration:** >0.05 µg/µL as determined by microplate BCA method

**Purity:** > 80% as determined by SDS-PAGE and Coomassie blue staining

**Buffer:** 25 mM Tris-HCl, 100 mM glycine, pH 7.3, 10% glycerol

**Preparation:** Recombinant protein was captured through anti-DDK affinity column followed by conventional chromatography steps.

**Note:** For testing in cell culture applications, please filter before use. Note that you may experience some loss of protein during the filtration process.

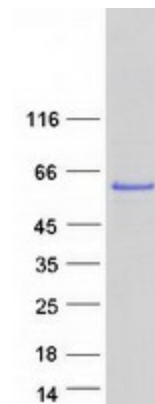
**Storage:** Store at -80°C.



[View online »](#)

<b>Stability:</b>	Stable for 12 months from the date of receipt of the product under proper storage and handling conditions. Avoid repeated freeze-thaw cycles.
<b>RefSeq:</b>	<a href="#">NP_751913</a>
<b>Locus ID:</b>	818
<b>UniProt ID:</b>	<a href="#">Q13555</a>
<b>RefSeq Size:</b>	3665
<b>Cytogenetics:</b>	10q22.2
<b>RefSeq ORF:</b>	1512
<b>Synonyms:</b>	CAMK; CAMK-II; CAMKG; MRD59
<b>Summary:</b>	The product of this gene is one of the four subunits of an enzyme which belongs to the serine/threonine protein kinase family, and to the Ca(2+)/calmodulin-dependent protein kinase subfamily. Calcium signaling is crucial for several aspects of plasticity at glutamatergic synapses. In mammalian cells the enzyme is composed of four different chains: alpha, beta, gamma, and delta. The product of this gene is a gamma chain. Many alternatively spliced transcripts encoding different isoforms have been described but the full-length nature of all the variants has not been determined.[provided by RefSeq, Mar 2011]
<b>Protein Families:</b>	Druggable Genome, Protein Kinase
<b>Protein Pathways:</b>	Calcium signaling pathway, ErbB signaling pathway, Glioma, GnRH signaling pathway, Long-term potentiation, Melanogenesis, Neurotrophin signaling pathway, Olfactory transduction, Oocyte meiosis, Wnt signaling pathway

### Product images:



Coomassie blue staining of purified CAMK2G protein (Cat# [TP317059]). The protein was produced from HEK293T cells transfected with CAMK2G cDNA clone (Cat# [RC217059]) using MegaTran 2.0 (Cat# [TT210002]).