

Product datasheet for **TP317059L**

CAMK2G (NM_172173) Human Recombinant Protein

Product data:

Product Type: Recombinant Proteins
Description: Recombinant protein of human calcium/calmodulin-dependent protein kinase II gamma (CAMK2G), transcript variant 6, 1 mg

Species: Human

Expression Host: HEK293T

Expression cDNA Clone or AA Sequence: >RC217059 representing NM_172173
Red=Cloning site **Green**=Tags(s)

MATTATCTRFDDYQLFEELGKGAFSWRRVCVKKTSTQEYAAKIINTKKLSARDHQKLEREARICRLLKH
 PNIVRLHDSISEEGFHYLVFDLVTGGELFEDIVAREYYSEADASHCIHQILESVDNHHQHDIVHRDLKPE
 NLLASKCKGAAVKLADDFGLAIEVQGEQQAWFGFAGTPGYLSPEVLRKDPYGKPVDIWACGVILYILLVG
 YPPFWDQDQHKLYQQIKAGAYDFPSPDWDTVTPEAKNLINQMLTINPAKRITADQALKHPWVCQRSTVAS
 MMHRQETVECLRKFNARRKLGAILTTMLVSRNFSAKSLNKKSDGGVQKPSNNKNSLEPQTTVHNAT
 DGIKGSTESCNTTTEDEDLKVQRKQEIITEQLIEAINNGDFEAYTKICDPGLTSFEPEALGNLVEGMDF
 HKFYFENLLSKNSKPIHTTILNPHVHVIGEDAACIAYIRLTQYIDGQGRPRTSQSEETRVWHRRDGKWLN
 VHYHCSGAPAAPLQ

TRTRPLEQKLISEEDLAANDILDYKDDDDKV

Tag: C-Myc/DDK

Predicted MW: 56.8 kDa

Concentration: >0.05 µg/µL as determined by microplate BCA method

Purity: > 80% as determined by SDS-PAGE and Coomassie blue staining

Buffer: 25 mM Tris-HCl, 100 mM glycine, pH 7.3, 10% glycerol

Preparation: Recombinant protein was captured through anti-DDK affinity column followed by conventional chromatography steps.

Note: For testing in cell culture applications, please filter before use. Note that you may experience some loss of protein during the filtration process.

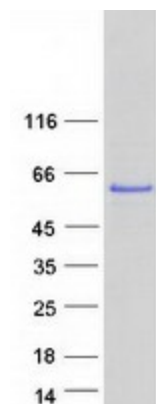
Storage: Store at -80°C.



[View online »](#)

| | |
|--------------------------|--|
| Stability: | Stable for 12 months from the date of receipt of the product under proper storage and handling conditions. Avoid repeated freeze-thaw cycles. |
| RefSeq: | NP_751913 |
| Locus ID: | 818 |
| UniProt ID: | Q13555 |
| RefSeq Size: | 3665 |
| Cytogenetics: | 10q22.2 |
| RefSeq ORF: | 1512 |
| Synonyms: | CAMK; CAMK-II; CAMKG; MRD59 |
| Summary: | The product of this gene is one of the four subunits of an enzyme which belongs to the serine/threonine protein kinase family, and to the Ca(2+)/calmodulin-dependent protein kinase subfamily. Calcium signaling is crucial for several aspects of plasticity at glutamatergic synapses. In mammalian cells the enzyme is composed of four different chains: alpha, beta, gamma, and delta. The product of this gene is a gamma chain. Many alternatively spliced transcripts encoding different isoforms have been described but the full-length nature of all the variants has not been determined.[provided by RefSeq, Mar 2011] |
| Protein Families: | Druggable Genome, Protein Kinase |
| Protein Pathways: | Calcium signaling pathway, ErbB signaling pathway, Glioma, GnRH signaling pathway, Long-term potentiation, Melanogenesis, Neurotrophin signaling pathway, Olfactory transduction, Oocyte meiosis, Wnt signaling pathway |

Product images:



Coomassie blue staining of purified CAMK2G protein (Cat# [TP317059]). The protein was produced from HEK293T cells transfected with CAMK2G cDNA clone (Cat# [RC217059]) using MegaTran 2.0 (Cat# [TT210002]).