

## Product datasheet for TP317059

### CAMK2G (NM\_172173) Human Recombinant Protein

#### Product data:

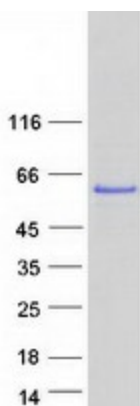
<b>Product Type:</b>	Recombinant Proteins
<b>Description:</b>	Recombinant protein of human calcium/calmodulin-dependent protein kinase II gamma (CAMK2G), transcript variant 6, 20 µg
<b>Species:</b>	Human
<b>Expression Host:</b>	HEK293T
<b>Expression cDNA Clone or AA Sequence:</b>	>RC217059 representing NM_172173 <b>Red</b> =Cloning site <b>Green</b> =Tags(s)
	MATTATCTRFTDDYQLFEELGKGAFSVRRRCVKKSTSTQEYAAKIINTKKLSARDHQKLEREARICRLLKH PNIVRLHDSISEEGFHLYVFDLVTGGELFEDIVAREYYSEADASHCIHQILESVDHDIHQRDLKPE NLLLASKCKGAAVKLADFGLAIEVQGEQQAWFGFAGTPGYLSPEVLRKDPYKPKVDIACGVILYLLVG YPPFWDEDQHKLYQKIKAGAYDFPSPEWDTVTPEAKNLINQMLTINPAKRITADQALKHPWVCQRSTVA S MMHRQETVECLRKFNARRKLGAILTTMLVSRNFSAKSLNKKSDGGVKPQSNNKNSLEPQTTVHNA T DGIKGSTESCNTTTEDEDLKVQRKQEIHKITEQLIEAINNGDFEAYTKICDPGLTSFEPEALGNLVEGMDF HKFYFENLLSKNSKPIHTTILNPHVHVIGEDAACIAYIRLTQYIDGQGRPRTSQSEETRVWHRRDGKWLN VHYHCSGAPAAPLQ
	<b>TRTRPLEQKLISEEDLAANDILDYKDDDDKV</b>
<b>Tag:</b>	C-Myc/DDK
<b>Predicted MW:</b>	56.8 kDa
<b>Concentration:</b>	>0.05 µg/µL as determined by microplate BCA method
<b>Purity:</b>	> 80% as determined by SDS-PAGE and Coomassie blue staining
<b>Buffer:</b>	25 mM Tris-HCl, 100 mM glycine, pH 7.3, 10% glycerol
<b>Preparation:</b>	Recombinant protein was captured through anti-DDK affinity column followed by conventional chromatography steps.
<b>Note:</b>	For testing in cell culture applications, please filter before use. Note that you may experience some loss of protein during the filtration process.
<b>Storage:</b>	Store at -80°C.



[View online »](#)

<b>Stability:</b>	Stable for 12 months from the date of receipt of the product under proper storage and handling conditions. Avoid repeated freeze-thaw cycles.
<b>RefSeq:</b>	<a href="#">NP_751913</a>
<b>Locus ID:</b>	818
<b>UniProt ID:</b>	<a href="#">Q13555</a>
<b>RefSeq Size:</b>	3665
<b>Cytogenetics:</b>	10q22.2
<b>RefSeq ORF:</b>	1512
<b>Synonyms:</b>	CAMK; CAMK-II; CAMKG; MRD59
<b>Summary:</b>	The product of this gene is one of the four subunits of an enzyme which belongs to the serine/threonine protein kinase family, and to the Ca(2+)/calmodulin-dependent protein kinase subfamily. Calcium signaling is crucial for several aspects of plasticity at glutamatergic synapses. In mammalian cells the enzyme is composed of four different chains: alpha, beta, gamma, and delta. The product of this gene is a gamma chain. Many alternatively spliced transcripts encoding different isoforms have been described but the full-length nature of all the variants has not been determined.[provided by RefSeq, Mar 2011]
<b>Protein Families:</b>	Druggable Genome, Protein Kinase
<b>Protein Pathways:</b>	Calcium signaling pathway, ErbB signaling pathway, Glioma, GnRH signaling pathway, Long-term potentiation, Melanogenesis, Neurotrophin signaling pathway, Olfactory transduction, Oocyte meiosis, Wnt signaling pathway

### Product images:



Coomassie blue staining of purified CAMK2G protein (Cat# TP317059). The protein was produced from HEK293T cells transfected with CAMK2G cDNA clone (Cat# [RC217059]) using MegaTran 2.0 (Cat# [TT210002]).