

## Product datasheet for **TP317032**

### CRCP (NM\_014478) Human Recombinant Protein

#### Product data:

Product Type:	Recombinant Proteins
Description:	Recombinant protein of human CGRP receptor component (CRCP), transcript variant 1, 20 µg
Species:	Human
Expression Host:	HEK293T
Expression cDNA Clone or AA Sequence:	>RC217032 representing NM_014478 <b>Red</b> =Cloning site <b>Green</b> =Tags(s)
	MEVKDANSALLSNYEVFQLLTDLKEQRKESGKNKHSSGQQNLNTITYETLKYISKTPCRHQSPDIVREFL TALKSHKLTKAQKLLNHRPVTAVEIQLMVEESEERLTEEQIEALLHTVTSILPAEPEAEQKKNTNSNV AMDEEDPA
	<b>TRTRPLEQKLISEEDLAANDILDYKDDDDKV</b>
Tag:	C-Myc/DDK
Predicted MW:	16.7 kDa
Concentration:	>0.05 µg/µL as determined by microplate BCA method
Purity:	> 80% as determined by SDS-PAGE and Coomassie blue staining
Buffer:	25 mM Tris-HCl, 100 mM glycine, pH 7.3, 10% glycerol
Preparation:	Recombinant protein was captured through anti-DDK affinity column followed by conventional chromatography steps.
Note:	For testing in cell culture applications, please filter before use. Note that you may experience some loss of protein during the filtration process.
Storage:	Store at -80°C.
Stability:	Stable for 12 months from the date of receipt of the product under proper storage and handling conditions. Avoid repeated freeze-thaw cycles.
RefSeq:	<a href="#">NP_055293</a>
Locus ID:	27297
UniProt ID:	<a href="#">O75575</a> , <a href="#">A0A024RDLO</a>
RefSeq Size:	1048



[View online »](#)

Cytogenetics: 7q11.21

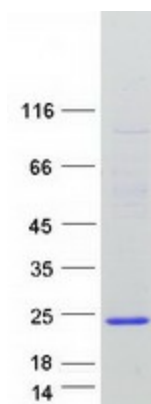
RefSeq ORF: 444

Synonyms: C17; CGRP-RCP; CGRPRCP; POLR3I; POLR3J; RCP; RCP9; RPC9

Summary: This gene encodes a membrane protein that functions as part of a receptor complex for a small neuropeptide that increases intracellular cAMP levels. Alternate transcriptional splice variants, encoding different isoforms, have been characterized. [provided by RefSeq, Jul 2008]

Protein Families: Druggable Genome

### Product images:



Coomassie blue staining of purified CRCP protein (Cat# TP317032). The protein was produced from HEK293T cells transfected with CRCP cDNA clone (Cat# [RC217032]) using MegaTran 2.0 (Cat# [TT210002]).