

Product datasheet for **TP317017M**

PMPCA (NM_015160) Human Recombinant Protein

Product data:

Product Type:	Recombinant Proteins
Description:	Recombinant protein of human peptidase (mitochondrial processing) alpha (PMPCA), nuclear gene encoding mitochondrial protein, 100 µg
Species:	Human
Expression Host:	HEK293T
Expression cDNA Clone or AA Sequence:	>RC217017 representing NM_015160 Red =Cloning site Green =Tags(s)

MAAVLAATRLLRGSGSWGCSRLRFPGPPAYRRFSSGGAYPNIPLSSPLPGVPKPVFATVDGQEKFKVT
TLDNGLRVASQNKFGQFCTVGILINSGSRYEAKYLSGIAHFLEKLAFSSTARFDSKDEILLTLEKHGGIC
YCQTSRDTTMYAVSADSKGLDVTVALLADVLPRLTDEEVEMTRMAVQFELEDLNLRPDPEPLLEMIH
EAAAYRENTVGLHRFCPTENVAKINREVLHSYLRNYYTPDRMVLAVGVEHEHLVDCARKYLLGVQPAWGS
AEAVIDDRSVAQYTGGIKLERDMSNVSLGPTPIPELTHIMVGLSCSFLEEDFIPFAVLNMMMGGGGSF
SAGGPGKGMFSRLYLNVLNRHHWYNATSYHHSYEDTGLLCIHASADPRQVREMVEITKEFILMGGTVD
TVELERAKTQLTSMMLNLESRPVIFEDVGRQVLATRSRKLPHLCTLRNVKPEDVKRVASKMLRGKPA
VAALGDLTDLPTYEHIQTALSSKDGRLPRTYRLFR

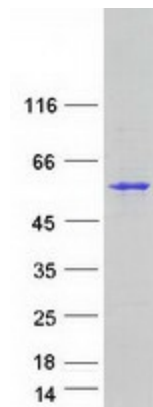
TRTRPLEQKLISEEDLAANDILDYKDDDDKV

Tag:	C-Myc/DDK
Predicted MW:	58.1 kDa
Concentration:	>0.05 µg/µL as determined by microplate BCA method
Purity:	> 80% as determined by SDS-PAGE and Coomassie blue staining
Buffer:	25 mM Tris-HCl, 100 mM glycine, pH 7.3, 10% glycerol
Preparation:	Recombinant protein was captured through anti-DDK affinity column followed by conventional chromatography steps.
Note:	For testing in cell culture applications, please filter before use. Note that you may experience some loss of protein during the filtration process.
Storage:	Store at -80°C.



[View online »](#)

Stability:	Stable for 12 months from the date of receipt of the product under proper storage and handling conditions. Avoid repeated freeze-thaw cycles.
RefSeq:	NP_055975
Locus ID:	23203
UniProt ID:	Q10713
RefSeq Size:	2097
Cytogenetics:	9q34.3
RefSeq ORF:	1575
Synonyms:	Alpha-MPP; CLA1; CPD3; INPP5E; MAS2; P-55; SCAR2
Summary:	The protein encoded by this gene is found in the mitochondrion, where it represents the alpha subunit of a proteolytic heterodimer. This heterodimer is responsible for cleaving the transit peptide from nuclear-encoded mitochondrial proteins. Defects in this gene are a cause of spinocerebellar ataxia, autosomal recessive 2. [provided by RefSeq, Mar 2016]
Protein Families:	Druggable Genome, Protease

Product images:

Coomassie blue staining of purified PMPCA protein (Cat# [TP317017]). The protein was produced from HEK293T cells transfected with PMPCA cDNA clone (Cat# [RC217017]) using MegaTran 2.0 (Cat# [TT210002]).