

Product datasheet for TP317017

PMPCA (NM_015160) Human Recombinant Protein

Product data:

| | |
|---------------------------------------|---|
| Product Type: | Recombinant Proteins |
| Description: | Recombinant protein of human peptidase (mitochondrial processing) alpha (PMPCA), nuclear gene encoding mitochondrial protein, 20 µg |
| Species: | Human |
| Expression Host: | HEK293T |
| Expression cDNA Clone or AA Sequence: | >RC217017 representing NM_015160 Red =Cloning site Green =Tags(s) |

MAAVLAATRLLRGSGSWGCSRLRFGPPAYRRFSSGGAYPNIPLSSPLPGVPKPVFATVDGQEKFKVT
TLDNGLRVASQNKFGQFCTVGILINSGSRYEAKYLSGIAHFLEKLAFSSTARFDSKDEILLTLEKHGGIC
YCQTSRDTTMYAVSADSKGLDVTVALLADVLPRLTDEEVEMTRMAVQFELEDLNLRPDPEPLLEMIH
EAAYRENTVGLHRFCPTENVAKINREVLHSYLRNYYTPDRMVLAVGVEHEHLVDCARKYLLGVQPAWGS
AEAVIDDRSVAQYTGGIKLERDMSNVSLGPTPIPELTHIMVGLSCSFLEEDFIPFAVLNMMMGGGGSF
SAGGPGKGMFSRLYLNVLNRHHWYNATSYYHSYEDTGLLCIHASADPRQVREMVEITKEFILMGGTVD
TVELERAKTQLTSMMLNLESRPVIFEDVGRQVLATRSRKLPHLCTLRNVKPEDVKRVASKMLRGKPA
VAALGDLTDLPTYEHIQTALSSKDGRLPRTYRLFR

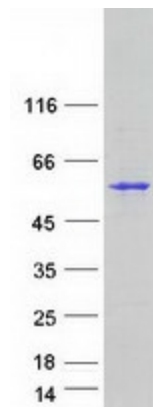
TRTRPLEQKLISEEDLAANDILDYKDDDDKV

| | |
|----------------|--|
| Tag: | C-Myc/DDK |
| Predicted MW: | 58.1 kDa |
| Concentration: | >0.05 µg/µL as determined by microplate BCA method |
| Purity: | > 80% as determined by SDS-PAGE and Coomassie blue staining |
| Buffer: | 25 mM Tris-HCl, 100 mM glycine, pH 7.3, 10% glycerol |
| Preparation: | Recombinant protein was captured through anti-DDK affinity column followed by conventional chromatography steps. |
| Note: | For testing in cell culture applications, please filter before use. Note that you may experience some loss of protein during the filtration process. |
| Storage: | Store at -80°C. |



[View online »](#)

| | |
|--------------------------|---|
| Stability: | Stable for 12 months from the date of receipt of the product under proper storage and handling conditions. Avoid repeated freeze-thaw cycles. |
| RefSeq: | NP_055975 |
| Locus ID: | 23203 |
| UniProt ID: | Q10713 |
| RefSeq Size: | 2097 |
| Cytogenetics: | 9q34.3 |
| RefSeq ORF: | 1575 |
| Synonyms: | Alpha-MPP; CLA1; CPD3; INPP5E; MAS2; P-55; SCAR2 |
| Summary: | The protein encoded by this gene is found in the mitochondrion, where it represents the alpha subunit of a proteolytic heterodimer. This heterodimer is responsible for cleaving the transit peptide from nuclear-encoded mitochondrial proteins. Defects in this gene are a cause of spinocerebellar ataxia, autosomal recessive 2. [provided by RefSeq, Mar 2016] |
| Protein Families: | Druggable Genome, Protease |

Product images:

Coomassie blue staining of purified PMPCA protein (Cat# TP317017). The protein was produced from HEK293T cells transfected with PMPCA cDNA clone (Cat# [RC217017]) using MegaTran 2.0 (Cat# [TT210002]).