

Product datasheet for TP316976L

CYP26C1 (NM_183374) Human Recombinant Protein

Product data:

Product Type:	Recombinant Proteins
Description:	Recombinant protein of human cytochrome P450, family 26, subfamily C, polypeptide 1 (CYP26C1), 1 mg
Species:	Human
Expression Host:	HEK293T
Expression cDNA Clone or AA Sequence:	>RC216976 representing NM_183374 Red=Cloning site Green=Tags(s)

MFPWGLSCLSVLGAAGTALLCAGLLLSLAQHLWTLRWMLSRDRASTLPLPKGSMGWPFPGETLHWLVQGS
RFHSSRRERYGTVFKTHLLGRPVIKRVSGAENVRTILLGEHRLVRSQWPQSAHILLGSHTLLGAVGEPHRR
RRKVLARVFSRAALERYVPRLQGALRHEVRSWCAAGGPVSVYDASKALTFRMAARILLGLRLDEAQCATL
ARTFEQLVENLFSPLDVPFSGLRKIRARDQLHRHLEGAISEKLHEDKAAEPGDALDLIIHSARELGHE
PSMQELKESAVELLFAAFFTTASASTSLVLLLLQHPAAIAKIREELVAQGLGRACGCAPGAAGGSEGPPP
DCGCEPDLSLAALGRLRYVDCVVKVLRLLPPVSGGYRTALRTFELDGYQIPKGWSVMYSIRDTHETA AV
YRSPPEGFDPERFGAAREDSRGASSRFHYIPFGGGARSCLGQELAQAVLQLLAVELVRTARWELATPAFF
AMQTVPIVHPVDGLRLFFHPLTPSVAGNGLCL

TRTRPLEQKLISEEDLAANDILDYKDDDDKV

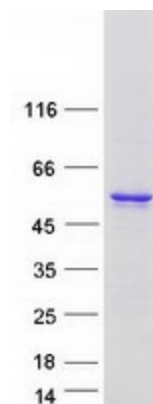
Tag:	C-Myc/DDK
Predicted MW:	56.9 kDa
Concentration:	>0.05 µg/µL as determined by microplate BCA method
Purity:	> 80% as determined by SDS-PAGE and Coomassie blue staining
Buffer:	25 mM Tris-HCl, 100 mM glycine, pH 7.3, 10% glycerol
Preparation:	Recombinant protein was captured through anti-DDK affinity column followed by conventional chromatography steps.
Note:	For testing in cell culture applications, please filter before use. Note that you may experience some loss of protein during the filtration process.
Storage:	Store at -80°C.



[View online »](#)

Stability:	Stable for 12 months from the date of receipt of the product under proper storage and handling conditions. Avoid repeated freeze-thaw cycles.
RefSeq:	NP_899230
Locus ID:	340665
UniProt ID:	Q6V0L0
RefSeq Size:	1569
Cytogenetics:	10q23.33
RefSeq ORF:	1566
Synonyms:	FFDD4
Summary:	This gene encodes a member of the cytochrome P450 superfamily of enzymes. The cytochrome P450 proteins are monooxygenases which catalyze many reactions involved in drug metabolism and synthesis of cholesterol, steroids and other lipids. This enzyme is involved in the catabolism of all-trans- and 9-cis-retinoic acid, and thus contributes to the regulation of retinoic acid levels in cells and tissues. This gene is adjacent to a related gene on chromosome 10q23.33. [provided by RefSeq, Jul 2008]
Protein Families:	Druggable Genome, Transmembrane
Protein Pathways:	Retinol metabolism

Product images:



Coomassie blue staining of purified CYP26C1 protein (Cat# [TP316976]). The protein was produced from HEK293T cells transfected with CYP26C1 cDNA clone (Cat# [RC216976]) using MegaTran 2.0 (Cat# [TT210002]).