

Product datasheet for **TP316966L**

REG3A (NM_138937) Human Recombinant Protein

Product data:

Product Type:	Recombinant Proteins
Description:	Recombinant protein of human regenerating islet-derived 3 alpha (REG3A), transcript variant 3, 1 mg
Species:	Human
Expression Host:	HEK293T
Expression cDNA Clone or AA Sequence:	>RC216966 protein sequence Red =Cloning site Green =Tags(s)

MLPPMALPSVSWMLLSCLMLLSQVQGEEPQRELP SARIRCPKGS KAYGSHCYALFLSPKSWTDADLACQK
RPSGNLVSVLGAEGSFVSSLVKSIGNSYSYVWIGLHDPTQGTEPN GEGWEWSSSDVMNYFAWERNPSTI
SSPGHCASLSRSTAF LRWKDYNCNVR LPYVCKFTD

TRTRPLEQKLISEEDLAANDILDYKDDDDKV

Tag:	C-Myc/DDK
Predicted MW:	16.5 kDa
Concentration:	>0.05 µg/µL as determined by microplate BCA method
Purity:	> 80% as determined by SDS-PAGE and Coomassie blue staining
Buffer:	25 mM Tris-HCl, 100 mM glycine, pH 7.3, 10% glycerol
Preparation:	Recombinant protein was captured through anti-DDK affinity column followed by conventional chromatography steps.
Note:	For testing in cell culture applications, please filter before use. Note that you may experience some loss of protein during the filtration process.
Storage:	Store at -80°C.
Stability:	Stable for 12 months from the date of receipt of the product under proper storage and handling conditions. Avoid repeated freeze-thaw cycles.
RefSeq:	NP_620354
Locus ID:	5068
UniProt ID:	Q06141 , Q53S56



[View online »](#)

RefSeq Size: 807

Cytogenetics: 2p12

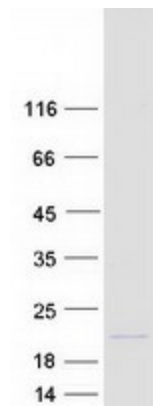
RefSeq ORF: 525

Synonyms: HIP; HIP/PAP; INGAP; PAP; PAP-H; PAP1; PBCGF; REG-III; REG3

Summary: This gene encodes a pancreatic secretory protein that may be involved in cell proliferation or differentiation. It has similarity to the C-type lectin superfamily. The enhanced expression of this gene is observed during pancreatic inflammation and liver carcinogenesis. The mature protein also functions as an antimicrobial protein with antibacterial activity. Alternate splicing results in multiple transcript variants that encode the same protein.[provided by RefSeq, Nov 2014]

Protein Families: Druggable Genome, Secreted Protein

Product images:



Coomassie blue staining of purified REG3A protein (Cat# [TP316966]). The protein was produced from HEK293T cells transfected with REG3A cDNA clone (Cat# [RC216966]) using MegaTran 2.0 (Cat# [TT210002]).