

## Product datasheet for **TP316919**

### DPP6 (NM\_001039350) Human Recombinant Protein

#### Product data:

Product Type:	Recombinant Proteins
Description:	Recombinant protein of human dipeptidyl-peptidase 6 (DPP6), transcript variant 3, 20 µg
Species:	Human
Expression Host:	HEK293T
Expression cDNA Clone or AA Sequence:	>RC216919 representing NM_001039350 <b>Red</b> =Cloning site <b>Green</b> =Tags(s)

MKEKAMIKTAKMQGNVMEVLVGSNPPQRNWKGIALLVILVICSLIVTSVILLTPAEDNSLSQKKKVTVE  
DLFSEDFKIHDPEAKWISDTEFIYREQGTVRLWNVETNTSTVLIIEGKKIESLRAIRYEISPDREYALFS  
YNVEPIYQHSYTGYYVLSKIPHGDPQSLDPPEVSNAKLQYAGWGPKGQQLIFENNIIYYCAHVGKQAIR  
VVSTGKEGVIYNGLSDWLYEEELKTHIAHWWSPDGTRELAYAAINDSRVPI MELPTYTGSIYPTVKPYHY  
PKAGSENPSISLHVIGLNGPHTDLEMMPPDDPRMREYYITMVKWATSTKVAVTWLNRAQNVSILTLCDAT  
TGVCTKKHEDESEAWLHRQNEEPVFSKDGRKFFFIRAIPQGGRGKPHYHITVSSSQPNSSNDNIQSITSGD  
WDVTKILAYDEKGNKIYFLSTEDLPRRRQLYSANTVGNFNRQCLSCDLVENCTYFSASFHSMDFLLKC  
EGPGVPMVTVHNTTDDKKMFDLETNEHVKKAINDRQMPKVEYRDIEIDYDNLPMQILKPATFTDTHYPL  
LLVVDGTPGSQSVAEKFEVSWETVMVSSHGAVVVKCDGRGSGFQGTKLLHEVRRRLGLLEEKDQMEAVRT  
MLKEQYIDRTRVAVFGKDYGGYLSTYILPAKGENQGQTFCTGSALSPITDFKLYASAFSERYLGLHGLDN  
RAYEMTKVAHRVSALEEQQFLIHPATADEKIHQHTAELITQLIRGKANYSLQIYPDESHYFTSSSLKQH  
LYRSIINFFVECFRIQDKLLTVTAKEDDEED

**TRTRPLEQKLISEEDLAANDILDYKDDDDKV**

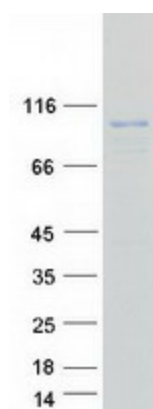
Tag:	C-Myc/DDK
Predicted MW:	91.1 kDa
Concentration:	>0.05 µg/µL as determined by microplate BCA method
Purity:	> 80% as determined by SDS-PAGE and Coomassie blue staining
Buffer:	25 mM Tris-HCl, 100 mM glycine, pH 7.3, 10% glycerol
Preparation:	Recombinant protein was captured through anti-DDK affinity column followed by conventional chromatography steps.
Note:	For testing in cell culture applications, please filter before use. Note that you may experience some loss of protein during the filtration process.



[View online »](#)

<b>Storage:</b>	Store at -80°C.
<b>Stability:</b>	Stable for 12 months from the date of receipt of the product under proper storage and handling conditions. Avoid repeated freeze-thaw cycles.
<b>RefSeq:</b>	<a href="#">NP_001034439</a>
<b>Locus ID:</b>	1804
<b>UniProt ID:</b>	<a href="#">E9PF59</a> , <a href="#">A7E2E4</a>
<b>RefSeq Size:</b>	4571
<b>Cytogenetics:</b>	7q36.2
<b>RefSeq ORF:</b>	2403
<b>Synonyms:</b>	DPL1; DPPX; MRD33; VF2
<b>Summary:</b>	This gene encodes a single-pass type II membrane protein that is a member of the peptidase S9B family of serine proteases. This protein has no detectable protease activity, most likely due to the absence of the conserved serine residue normally present in the catalytic domain of serine proteases. However, it does bind specific voltage-gated potassium channels and alters their expression and biophysical properties. Variations in this gene may be associated with susceptibility to amyotrophic lateral sclerosis and with idiopathic ventricular fibrillation. Alternative splicing results in multiple transcript variants. [provided by RefSeq, Mar 2014]
<b>Protein Families:</b>	Druggable Genome, Protease, Transmembrane

### Product images:



Coomassie blue staining of purified DPP6 protein (Cat# TP316919). The protein was produced from HEK293T cells transfected with DPP6 cDNA clone (Cat# [RC216919]) using MegaTran 2.0 (Cat# [TT210002]).