

## Product datasheet for **TP316917M**

### STEAP4 (NM\_024636) Human Recombinant Protein

#### Product data:

|                                       |  |
|---------------------------------------|--|
| Product Type:                         | Recombinant Proteins   |
| Description:                          | Recombinant protein of human STEAP family member 4 (STEAP4), 100 µg  |
| Species:                              | Human  |
| Expression Host:                      | HEK293T  |
| Expression cDNA Clone or AA Sequence: | >RC216917 representing NM_024636<br><b>Red</b> =Cloning site <b>Green</b> =Tags(s)   |
|                                       | <p>MEKTCIDALPLTMNSSEKQETVCIFGTGDFGRSLGLKMLQC GYSVWFGRNPQKTTLLPSGAEVLSYSEA<br/>AKKSDIIIIAHREHYDFLTEVLNGKILVDISNNLKINQYPESNAEYLAHLVPGAHVVKAFNTISAW<br/>ALQSGALDASRQVFVCGNDSKAKQRVMDIVRNGLTPMDQGSLMAAKEIEKYPLQLFPMWRFPFYL SAVL<br/>CVLFFYCVIRDVIYPYVYEKDN TFRMAISIPNRFIPITALTLLALVYLPGVIAAILQLYRGTKYRRFP<br/>DWLDHWMLCRKQLGLVALGFAFLHVLYTLVIPIRYVRWRLGNLTVTQAILKKENPFSTSSAWLSDSYVA<br/>LGILGFFLVLLGITS LPSVSNVAVNWREFRVQSKLGYLTLLCTAHTLVYGGKRFLSPSNLRWYLPAA Y<br/>VLGLIIPCTVLVIKFVLIMPCVDNLT LRIRQGWERN SKH</p> <p><b>TRTRPLEQKLISEEDLAANDILDYKDDDDKV</b></p> |
| Tag:                                  | C-Myc/DDK  |
| Predicted MW:                         | 51.8 kDa   |
| Concentration:                        | >0.05 µg/µL as determined by microplate BCA method   |
| Purity:                               | > 80% as determined by SDS-PAGE and Coomassie blue staining  |
| Buffer:                               | 25 mM Tris-HCl, 100 mM glycine, pH 7.3, 10% glycerol   |
| Preparation:                          | Recombinant protein was captured through anti-DDK affinity column followed by conventional chromatography steps.   |
| Note:                                 | For testing in cell culture applications, please filter before use. Note that you may experience some loss of protein during the filtration process.   |
| Storage:                              | Store at -80°C.  |
| Stability:                            | Stable for 12 months from the date of receipt of the product under proper storage and handling conditions. Avoid repeated freeze-thaw cycles.  |
| RefSeq:                               | <u><a href="#">NP_078912</a></u>   |



[View online »](#)

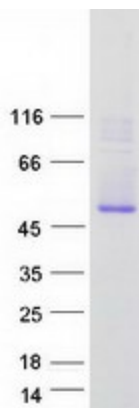
Locus ID: 79689  
UniProt ID: [Q687X5](#)  
RefSeq Size: 4454  
Cytogenetics: 7q21.12  
RefSeq ORF: 1377

Synonyms: SchLAH; STAMP2; TIARP; TNFAIP9

**Summary:** The protein encoded by this gene belongs to the STEAP (six transmembrane epithelial antigen of prostate) family, and resides in the golgi apparatus. It functions as a metalloredutase that has the ability to reduce both Fe(3+) to Fe(2+) and Cu(2+) to Cu(1+), using NAD(+) as acceptor. Studies in mice and human suggest that this gene maybe involved in adipocyte development and metabolism, and may contribute to the normal biology of the prostate cell, as well as prostate cancer progression. Alternatively spliced transcript variants encoding different isoforms have been found for this gene. [provided by RefSeq, Apr 2011]

**Protein Families:** Druggable Genome, Transmembrane

### Product images:



Coomassie blue staining of purified STEAP4 protein (Cat# [TP316917]). The protein was produced from HEK293T cells transfected with STEAP4 cDNA clone (Cat# [RC216917]) using MegaTran 2.0 (Cat# [TT210002]).