

Product datasheet for **TP316911M**

A1CF (NM_138933) Human Recombinant Protein

Product data:

Product Type:	Recombinant Proteins
Description:	Recombinant protein of human APOBEC1 complementation factor (A1CF), transcript variant 3, 100 µg
Species:	Human
Expression Host:	HEK293T
Expression cDNA Clone or AA Sequence:	>RC216911 representing NM_138933 Red =Cloning site Green =Tags(s)

MEAVCLGTCPEPEASMSTAIPGLKKGNNALQSIIQLTLEKENGQRKYGGPPPGWDAAPPERGCEIFIGK
LPRDLFEDELIPLCEKIGKIYEMRMMDFNGNRRGYAFVTFSNKVEAKNAIKQLNNEYEIRNGRLLGVCAS
VDNCRFLVGGIPKTKKREEILSEMKKVTEGVVDVIVYPSAADKTKNRGFVVEYESHRAAAMARRKLLPG
RIQLWGHGIAVDWAEPEVEDEDTMSSVKILYVRNLMLSTSEEMIEKEFNINIKPFAVERVKKIRDYAFVH
FSNREDAVEAMKALNGKVLGDGSPIEVTLAKPVDKDSYVRYTRGTGGRGTMLQGEYTYSLGQVYDPTTTYL
GAPVYFAPQTYAAIPSLHFPAKKGHLSNRAIRAPSVRGAAGVRLGGRGYLAYTGLGRGYQVKGDKRED
KLYDILPGMELTPMNPVTLKPPQGIKLAQILEEICQKNNWGPVYQLHSAIQDQRQLFLYKITIPALAS
QNPAIHPFTPPKLSAFVDEAKTYAAEYTLQTLGIPTDGGDGMTATAAAAATAFPGYAVPNATAPVSAAQL
KQAVTLGQDLAAYTTYEVYPTFAVTARGDGYGTF

TRTRPLEQKLISEEDLAANDILDYKDDDDKV

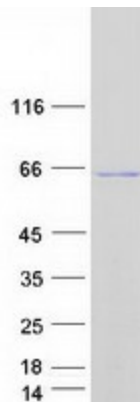
Tag:	C-Myc/DDK
Predicted MW:	64.8 kDa
Concentration:	>0.05 µg/µL as determined by microplate BCA method
Purity:	> 80% as determined by SDS-PAGE and Coomassie blue staining
Buffer:	25 mM Tris-HCl, 100 mM glycine, pH 7.3, 10% glycerol
Preparation:	Recombinant protein was captured through anti-DDK affinity column followed by conventional chromatography steps.
Note:	For testing in cell culture applications, please filter before use. Note that you may experience some loss of protein during the filtration process.
Storage:	Store at -80°C.



[View online »](#)

Stability:	Stable for 12 months from the date of receipt of the product under proper storage and handling conditions. Avoid repeated freeze-thaw cycles.
RefSeq:	NP_620311
Locus ID:	29974
UniProt ID:	Q9NQ94 , A0A024QZ19
RefSeq Size:	2223
Cytogenetics:	10q11.23
RefSeq ORF:	1782
Synonyms:	ACF; ACF64; ACF65; APOBEC1CF; ASP
Summary:	Mammalian apolipoprotein B mRNA undergoes site-specific C to U deamination, which is mediated by a multi-component enzyme complex containing a minimal core composed of APOBEC-1 and a complementation factor encoded by this gene. The gene product has three non-identical RNA recognition motifs and belongs to the hnRNP R family of RNA-binding proteins. It has been proposed that this complementation factor functions as an RNA-binding subunit and docks APOBEC-1 to deaminate the upstream cytidine. Studies suggest that the protein may also be involved in other RNA editing or RNA processing events. Several transcript variants encoding a few different isoforms have been found for this gene. [provided by RefSeq, Nov 2010]

Product images:



Coomassie blue staining of purified A1CF protein (Cat# [TP316911]). The protein was produced from HEK293T cells transfected with A1CF cDNA clone (Cat# [RC216911]) using MegaTran 2.0 (Cat# [TT210002]).