

Product datasheet for TP316900

POTEB3 (NM_207355) Human Recombinant Protein

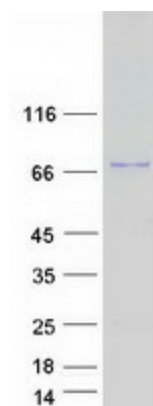
Product data:

Product Type:	Recombinant Proteins
Description:	Recombinant protein of human POTE ankyrin domain family, member B (POTEB), 20 µg
Species:	Human
Expression Host:	HEK293T
Expression cDNA Clone or AA Sequence:	>RC216900 protein sequence Red=Cloning site Green=Tags(s)
	<p>MVAEVC SMPAASAVKKPFDLR SKMGKWCHHRFPCCRGSGKSNMGTS GDHDDSF MKTLRSKMGKCCHHCFP CCRGSGT SNVGTSGDHDNSFMKTLRSKMGKWCC HCFCCRGSGKSNVGTWGDYDDSAFMEPRYHVRREDL DKLHRAAWWGK VPRKDLIVMLRDTDMNKRDKQKRTALHLASANGNSEVQ LLLDRRCQLNVLDNKKRTAL IKAVQCQEDECVL MLEHGADGNIQDEYGNTALHYAIYNEDKLMAKALLYGADIESKNKCGLT PLLLLGV HEQKQQVVKFLIKKANLNALDRYGR TALILAVCCGSASIVNLLLEQNVDVSSQDL SGTAREYAVSSH HVICELLSDYKEKQMLKISSENSNPEQDLKLTSEESQRLKVSSENSQPEKMSQEP EINKDCDREVEEIEIK KHG SNPVG L PENLTNGASAGNGDDGLIPQRKSRK PENQQFPDTENE EYHSDEQNDTQKQLSEEQNTGISQ DEILTNKQKQIEVAEKEMNSELSL SHKKEEDLLRENSMLREEIAKLRLELDETKHQ NQLRENKILEEIES VKEKLLKTIQLNEEALTKTSI</p> <p>TRTRPLEQKLISEEDLAANDILDYKDDDDKV</p>
Tag:	C-Myc/DDK
Predicted MW:	65.5 kDa
Concentration:	>0.05 µg/µL as determined by microplate BCA method
Purity:	> 80% as determined by SDS-PAGE and Coomassie blue staining
Buffer:	25 mM Tris-HCl, 100 mM glycine, pH 7.3, 10% glycerol
Preparation:	Recombinant protein was captured through anti-DDK affinity column followed by conventional chromatography steps.
Note:	For testing in cell culture applications, please filter before use. Note that you may experience some loss of protein during the filtration process.
Storage:	Store at -80°C.



[View online »](#)

Stability:	Stable for 12 months from the date of receipt of the product under proper storage and handling conditions. Avoid repeated freeze-thaw cycles.
RefSeq:	NP_997238
Locus ID:	102724631
UniProt ID:	Q6S5H4 , A0JP26
RefSeq Size:	2136
Cytogenetics:	15q11.2
RefSeq ORF:	1743
Synonyms:	POTE-15; POTEB

Product images:

Coomassie blue staining of purified POTEB3 protein (Cat# TP316900). The protein was produced from HEK293T cells transfected with POTEB3 cDNA clone (Cat# [RC216900]) using MegaTran 2.0 (Cat# [TT210002]).