

Product datasheet for **TP316890M**

C14orf166B (LRRC74A) (NM_001081002) Human Recombinant Protein

Product data:

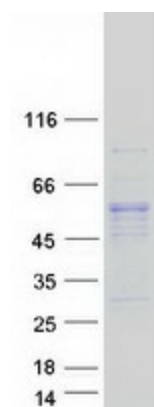
Product Type:	Recombinant Proteins
Description:	Recombinant protein of human chromosome 14 open reading frame 166B (C14orf166B), 100 µg
Species:	Human
Expression Host:	HEK293T
Expression cDNA Clone or AA Sequence:	>RC216890 protein sequence Red =Cloning site Green =Tags(s)
	<p>MPPDEIEIEPVRQSSDKMLYCEAESPTVEKVKPARENSETDLEIEDDEKFFTTGQKELYLEACKLMGVV PVSYFIRNMEESYVNLNHHGLGPRGTKAIAIALVSNMAVTKLELEDNCIMEEGVLSLVEMLQENYYLQEM NISNNHLGLEGARIISDFFERNSSSIWSLELSGNDFKEDSAALLCQALSTNYQIKKLDLSHNQFSDVGGE HLGQMLAINVGLTSLDLSWNNFHTRGAVALCNGLRGNVTLTKLDLSMNGFGNEVALALGEVLRNLNRCV Y LDIGGNDIGNEGASKISKGLNESLRVLKFLNPINMDGAILLILAIKRNPKSRMEELDISNVLVSEQF MKTLDGVYAVHPQLDVVFKAVQGLSPKKTIFLLTNPMKLIQSYADQHKITIVDFFKSLNPTGTMKMSVDE FQKVMIEQNKVPLNQYQVREVIKKLDEKTGMVNFSLNTMKP</p> <p>TRTRPLEQKLISEEDLAANDILDYKDDDDKV</p>
Tag:	C-Myc/DDK
Predicted MW:	52.2
Concentration:	>0.05 µg/µL as determined by microplate BCA method
Purity:	> 80% as determined by SDS-PAGE and Coomassie blue staining
Buffer:	25 mM Tris-HCl, 100 mM glycine, pH 7.3, 10% glycerol
Preparation:	Recombinant protein was captured through anti-DDK affinity column followed by conventional chromatography steps.
Note:	For testing in cell culture applications, please filter before use. Note that you may experience some loss of protein during the filtration process.
Storage:	Store at -80°C.



[View online »](#)

Stability:	Stable for 12 months from the date of receipt of the product under proper storage and handling conditions. Avoid repeated freeze-thaw cycles.
Locus ID:	145497
UniProt ID:	<u>Q0VAA2</u>
RefSeq Size:	1734
Cytogenetics:	14q24.3
RefSeq ORF:	1386
Synonyms:	chromosome 14 open reading frame 166B

Product images:



Coomassie blue staining of purified C14orf166B protein (Cat# [TP316890]). The protein was produced from HEK293T cells transfected with C14orf166B cDNA clone (Cat# [RC216890]) using MegaTran 2.0 (Cat# [TT210002]).