

## Product datasheet for TP316890

### C14orf166B (LRRC74A) (NM\_001081002) Human Recombinant Protein

#### Product data:

Product Type:	Recombinant Proteins
Description:	Recombinant protein of human chromosome 14 open reading frame 166B (C14orf166B), 20 µg
Species:	Human
Expression Host:	HEK293T
Expression cDNA Clone or AA Sequence:	>RC216890 protein sequence Red=Cloning site Green=Tags(s)

MPPDEIEIEPVRQSSDKMLYCEAESPTVEKVKPARENSETDLEIEDDEKFFTTGQKELYLEACKLMGVV  
 PVSYFIRNMEESYVNLNHHGLGPRGTKAIAIALVSNMAVTKLEEDNCIMEEGVLSLVEMLQENYYLQEM  
 NISNNHLGLEGARIISDFERNSSSIWSLELSGNDFKEDSAALLCQALSTNYQIKKLDLSHNQFSDVGGE  
 HLGQMLAINVGLTSLDLSWNNFHTRGAVALCNGLRGNVTLTKLDLSMNGFGNEVALALGEVRLNRCLVY  
 LDIGGNDIGNEGASKISKGLESNESLRVLKFLNPINMDGAILLILAIKRNPKSRMEELDISNVLVSEQF  
 MKTLDGVYAVHPQLDWVFKAVQGLSPKKTIFLLTNPMKLIQSYADQHKITIVDFFKSLNPTGTMKMSVDE  
 FQKVMIEQNKVPLNQYQVREVIKKLDEKTMVNFSLNMTMKP

TRTRPLEQKLISEEDLAANDILDYKDDDDKV

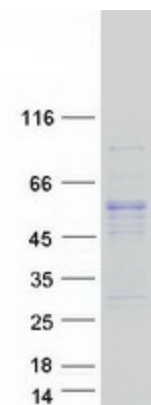
Tag:	C-Myc/DDK
Predicted MW:	52.2
Concentration:	>0.05 µg/µL as determined by microplate BCA method
Purity:	> 80% as determined by SDS-PAGE and Coomassie blue staining
Buffer:	25 mM Tris-HCl, 100 mM glycine, pH 7.3, 10% glycerol
Preparation:	Recombinant protein was captured through anti-DDK affinity column followed by conventional chromatography steps.
Note:	For testing in cell culture applications, please filter before use. Note that you may experience some loss of protein during the filtration process.
Storage:	Store at -80°C.
Stability:	Stable for 12 months from the date of receipt of the product under proper storage and handling conditions. Avoid repeated freeze-thaw cycles.
Locus ID:	145497



[View online »](#)

UniProt ID: [Q0VAA2](#)  
RefSeq Size: 1734  
Cytogenetics: 14q24.3  
RefSeq ORF: 1386  
Synonyms: chromosome 14 open reading frame 166B

### Product images:



Coomassie blue staining of purified C14orf166B protein (Cat# TP316890). The protein was produced from HEK293T cells transfected with C14orf166B cDNA clone (Cat# [RC216890]) using MegaTran 2.0 (Cat# [TT210002]).