

Product datasheet for **TP316883M**

G protein alpha S (GNAS) (NM_001077489) Human Recombinant Protein

Product data:

Product Type:	Recombinant Proteins
Description:	Purified recombinant protein of Homo sapiens GNAS complex locus (GNAS), transcript variant 7, 100 µg
Species:	Human
Expression Host:	HEK293T
Expression cDNA Clone or AA Sequence:	>RC216883 representing NM_001077489 Red =Cloning site Green =Tags(s)

MGCLGNSKTEDQRNEEKAQREANKKIEKQLQKDKQVYRATHRLLLLGAGESGKSTIVKQMRILHVNGFNG
DEKATKVQDIKNNLKEALETIVAAMSNLVPPVELANPENQFRVDYILSVMNVPDFDFPPEFYEHAKALWE
DEGVRACYERSNEYQLIDCAQYFLDKIDVIKQADYVPSDQDLLRCRVLTSGFIFETKFQVDKVNFMFDVG
GQRDERRKWIQC FNDVTAIIFVASSYNMVIREDNQTNRLLQALNLFKSIWNNRRLRTISVILFLNKQD
LLAEKVLGKSKIEDYFPEFARYTTPEDATPEPGEDPRVTRAKYFIRDEFRLISTASGDGRHYCYPHFTC
AVDTENIRRVFNDCRDIIQRMHLRQYELL

TRRLEQKLISEEDLAANDILDYKDDDDKV

Tag:	C-Myc/DDK
Predicted MW:	44 kDa
Concentration:	>0.05 µg/µL as determined by microplate BCA method
Purity:	> 80% as determined by SDS-PAGE and Coomassie blue staining
Buffer:	25 mM Tris-HCl, 100 mM glycine, pH 7.3, 10% glycerol
Preparation:	Recombinant protein was captured through anti-DDK affinity column followed by conventional chromatography steps.
Note:	For testing in cell culture applications, please filter before use. Note that you may experience some loss of protein during the filtration process.
Storage:	Store at -80°C.
Stability:	Stable for 12 months from the date of receipt of the product under proper storage and handling conditions. Avoid repeated freeze-thaw cycles.
RefSeq:	<u>NP_001070957</u>



[View online »](#)

Locus ID: 2778

UniProt ID: [Q5FWY2](#), [O95467](#), [P63092](#)

RefSeq Size: 1881

Cytogenetics: 20q13.32

RefSeq ORF: 1137

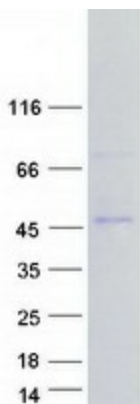
Synonyms: AHO; C20orf45; GNAS1; GPSA; GSA; GSP; NESP; PITA3; POH; SCG6; SgVI

Summary: This locus has a highly complex imprinted expression pattern. It gives rise to maternally, paternally, and biallelically expressed transcripts that are derived from four alternative promoters and 5' exons. Some transcripts contain a differentially methylated region (DMR) at their 5' exons, and this DMR is commonly found in imprinted genes and correlates with transcript expression. An antisense transcript is produced from an overlapping locus on the opposite strand. One of the transcripts produced from this locus, and the antisense transcript, are paternally expressed noncoding RNAs, and may regulate imprinting in this region. In addition, one of the transcripts contains a second overlapping ORF, which encodes a structurally unrelated protein - Alex. Alternative splicing of downstream exons is also observed, which results in different forms of the stimulatory G-protein alpha subunit, a key element of the classical signal transduction pathway linking receptor-ligand interactions with the activation of adenylyl cyclase and a variety of cellular responses. Multiple transcript variants encoding different isoforms have been found for this gene. Mutations in this gene result in pseudohypoparathyroidism type 1a, pseudohypoparathyroidism type 1b, Albright hereditary osteodystrophy, pseudopseudohypoparathyroidism, McCune-Albright syndrome, progressive osseous heteroplasia, polyostotic fibrous dysplasia of bone, and some pituitary tumors. [provided by RefSeq, Aug 2012]

Protein Families: Druggable Genome, Secreted Protein

Protein Pathways: Calcium signaling pathway, Dilated cardiomyopathy, Gap junction, GnRH signaling pathway, Long-term depression, Melanogenesis, Taste transduction, Vascular smooth muscle contraction, Vibrio cholerae infection

Product images:



Coomassie blue staining of purified GNAS protein (Cat# [TP316883]). The protein was produced from HEK293T cells transfected with GNAS cDNA clone (Cat# [RC216883]) using MegaTran 2.0 (Cat# [TT210002]).

