

## Product datasheet for **TP316877**

### THYN1 (NM\_014174) Human Recombinant Protein

#### Product data:

Product Type:	Recombinant Proteins
Description:	Recombinant protein of human thymocyte nuclear protein 1 (THYN1), transcript variant 1, 20 µg
Species:	Human
Expression Host:	HEK293T
Expression cDNA Clone or AA Sequence:	>RC216877 protein sequence <b>Red</b> =Cloning site <b>Green</b> =Tags(s)
	 MSRPRKRLAGTSGSDKGLSGKRTKTENSVEALAKVEDSNPQKTSATKNCLKNLSSHWMKSEPESRLEKG VDVKFSIEDLKAQPKQTTCWDGVRNYQARNFLRAMKLGEEAFFYHSNCKEPIAGLMKIVKEAYPDHTQF EKNNPHYDPSSKEDNPKWSMVDVQFVRMMKRFIPLAELKSYHQAHKATGGPLKNMVLFTRQRLSIQPLTQ EEFDVLSLEEKEPS  <b>TRTRPLEQKLISEEDLAANDILDYKDDDDKV</b>
Tag:	C-Myc/DDK
Predicted MW:	25.5 kDa
Concentration:	>0.05 µg/µL as determined by microplate BCA method
Purity:	> 80% as determined by SDS-PAGE and Coomassie blue staining
Buffer:	25 mM Tris-HCl, 100 mM glycine, pH 7.3, 10% glycerol
Preparation:	Recombinant protein was captured through anti-DDK affinity column followed by conventional chromatography steps.
Note:	For testing in cell culture applications, please filter before use. Note that you may experience some loss of protein during the filtration process.
Storage:	Store at -80°C.
Stability:	Stable for 12 months from the date of receipt of the product under proper storage and handling conditions. Avoid repeated freeze-thaw cycles.
RefSeq:	<a href="#">NP_054893</a>
Locus ID:	29087



[View online »](#)

UniProt ID: [Q9P016](#), [A0A024R3M1](#)

RefSeq Size: 1323

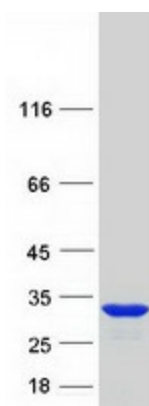
Cytogenetics: 11q25

RefSeq ORF: 675

Synonyms: HSPC144; MDS012; MY105; THY28; THY28KD

Summary: This gene encodes a protein that is highly conserved among vertebrates and plant species and may be involved in the induction of apoptosis. Alternatively spliced transcript variants encoding different isoforms have been described. [provided by RefSeq, Jul 2008]

### Product images:



Coomassie blue staining of purified THYN1 protein (Cat# TP316877). The protein was produced from HEK293T cells transfected with THYN1 cDNA clone (Cat# [RC216877]) using MegaTran 2.0 (Cat# [TT210002]).