

Product datasheet for **TP316858M**

Apolipoprotein L 2 (APOL2) (NM_145637) Human Recombinant Protein

Product data:

Product Type:	Recombinant Proteins
Description:	Recombinant protein of human apolipoprotein L, 2 (APOL2), transcript variant beta, 100 µg
Species:	Human
Expression Host:	HEK293T
Expression cDNA Clone or AA Sequence:	>RC216858 protein sequence Red =Cloning site Green =Tags(s)

MNPESSIFIEDYLKYFQDQVSRENLLQLLTDDEAWNGFVAAAELPRDEADELRKALNKLASHMVMKDKNR
HDKDQQRQWFLKEFPRLKRELEDHIRKLRALAEVEQVHRGTTIANVNSNSVGTSGILTLGLGLAPF
TEGISFVLLDTGMGLGAAAAGITCSVELVNKLRRARAQARNLDQSGTNAVAKVMKEFVGGNTPNVLTLV
DNWYQVTQGIGRNIRAIRRANPQLGAYAPPPHVIGRISAEGGEQVERVVEGPAQAMSRGTMIVGAATG
GILLLLDVVSLAYESKHLLEGAKSESAEELKKRAQELEGKLNFLTKEHMLQPGQDQ

TRTRPLEQKLISEEDLAANDILDYKDDDDKV

Tag:	C-Myc/DDK
Predicted MW:	36.9 kDa
Concentration:	>0.1 µg/µL as determined by microplate BCA method
Purity:	> 80% as determined by SDS-PAGE and Coomassie blue staining
Buffer:	25 mM Tris-HCl, 100 mM glycine, pH 7.3, 10% glycerol
Preparation:	Recombinant protein was captured through anti-DDK affinity column followed by conventional chromatography steps.
Note:	For testing in cell culture applications, please filter before use. Note that you may experience some loss of protein during the filtration process.
Storage:	Store at -80°C.
Stability:	Stable for 12 months from the date of receipt of the product under proper storage and handling conditions. Avoid repeated freeze-thaw cycles.
RefSeq:	NP_663612
Locus ID:	23780



[View online »](#)

UniProt ID: [Q9BQE5](#), [A0A024R1M8](#)

RefSeq Size: 2686

Cytogenetics: 22q12.3

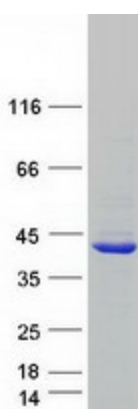
RefSeq ORF: 1011

Synonyms: APOL-II; APOL3

Summary: This gene is a member of the apolipoprotein L gene family. The encoded protein is found in the cytoplasm, where it may affect the movement of lipids or allow the binding of lipids to organelles. Two transcript variants encoding the same protein have been found for this gene. [provided by RefSeq, Jul 2008]

Protein Families: Druggable Genome, Transmembrane

Product images:



Coomassie blue staining of purified APOL2 protein (Cat# [TP316858]). The protein was produced from HEK293T cells transfected with APOL2 cDNA clone (Cat# [RC216858]) using MegaTran 2.0 (Cat# [TT210002]).