

Product datasheet for TP316802

SEC31A (NM_001077208) Human Recombinant Protein

Product data:

Product Type: Recombinant Proteins
Description: Recombinant protein of human SEC31 homolog A (*S. cerevisiae*) (SEC31A), transcript variant 3, 20 µg
Species: Human
Expression Host: HEK293T
Expression cDNA Clone or AA Sequence: >RC216802 protein sequence
Red=Cloning site Green=Tags(s)

MKLKEVDRTAMQAWSPAQNHPYIATGTSAQQLDATFSTNASLEIFELDLSDPSLDMKSCATFSSSHRYH
 KLIWGPYKMDKSGDVSGVLIAGGENGNILYDPSKIIAGDKEVIAQNDKHTGPVRALDVNIFQTNLVAS
 GANESEIYIDLNNFATPMTPGAQTQPPEDISCIANRQVQHILASASPSGRATVWDLRKNNEPIIKVSDH
 SNRMHCSGLAWHPDVATQMVLA SEDDRLPVIQMWDLRFASSPLRVLENHARGILAIASWMAPELLSCG
 KDAKILCSNPNTGEVLYELPTNTQWCFDIQWCPRNPAVLSAASF DGRISVYSIMGGSTDGLRQKQVDKLS
 SSFGNLDPFGTGQPLPPLQIPQQTAAQHSIVLPLKPPKWIRRPV GASFSFGGKLVTFENVRMP SHQGAEQ
 QQQQHVFISQVTEKEFLSRSDQLQAVQSQGFINYCQKKIDASQTEFEKNVWSFLKVNFE DDSRGKYL
 ELLGYRKEDLGKKIALALNKVDGANVALKDS DQVAQSDGEE SPA AEEQLLGEHIKEEKEESEFLPSSGGT
 FNISVSGDIDGLITQALLTGNFESAVDLCLHDNR MADAIILA IAGGQELLARTQKKYFAKSQSKITRLIT
 AVVMKNWKEIVESC DLKNWREALAAVLTYAKPDEF S ALCDLLGTRLENEGDSLLQTQACL CYICAGNVEK
 LVACWTKAQDGSHP LSLQDLIEKVILRKAVQLTQAMDTSTVGVLLAAKMSQYANLLAAQGSIAAALAF L
 PDNTNQPNIMQLRDRLCRAQGE PVAGHESPKIPYEKQQLPKGRPGPVAGHHQMPRVQTQQYYPHGENPPP
 PGFIMHG NVNPNAAAGQLPTSPGHMHTQVPPYPQPQPYQPAQYYPFGTGG SAMYRPPQPVAPPTS NAYPNT
 PYISSASSYTGQSQLYAAHQASSPTSSPATSFPPPPSSGASFQHGGPGAPPSSSAYALPPGTTGPQNGW
 NDPPALNRVPK KKKMPENFMPPVPITSPIMNPLGDPQS QMLQQQPSAPVPLSSQSSFPQPHLPGGQPFHG
 VQQPLGQTGMPPSFSKPNIEGAPGAPIGNTFQHVQSLPTKKITKKPIPDEHLILKTTFFEDLIQRCLSSAT
 DPQTKRKLDDASKRLEFLYDKLREQTLSPTITSGLHNIARSIETRNYSEGLTMHTHIVSTSNFSETS AFM
 PVLKVVLTQANKLGV

TRTRPLEQKLISEEDLAANDILDYKDDDDKV

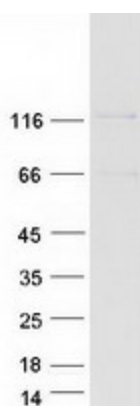
Tag: C-Myc/DDK
Predicted MW: 131.4 kDa
Concentration: >0.05 µg/µL as determined by microplate BCA method



[View online »](#)

Purity:	> 80% as determined by SDS-PAGE and Coomassie blue staining
Buffer:	25 mM Tris-HCl, 100 mM glycine, pH 7.3, 10% glycerol
Preparation:	Recombinant protein was captured through anti-DDK affinity column followed by conventional chromatography steps.
Note:	For testing in cell culture applications, please filter before use. Note that you may experience some loss of protein during the filtration process.
Storage:	Store at -80°C.
Stability:	Stable for 12 months from the date of receipt of the product under proper storage and handling conditions. Avoid repeated freeze-thaw cycles.
RefSeq:	NP_001070676
Locus ID:	22872
UniProt ID:	O94979
RefSeq Size:	4224
Cytogenetics:	4q21.22
RefSeq ORF:	3615
Synonyms:	ABP125; ABP130; HSPC275; HSPC334; NEDSOSB; SEC31L1
Summary:	The protein encoded by this gene shares similarity with the yeast Sec31 protein, and is a component of the outer layer of the coat protein complex II (COPII). The encoded protein is involved in vesicle budding from the endoplasmic reticulum (ER) and contains multiple WD repeats near the N-terminus and a proline-rich region in the C-terminal half. It associates with the protein encoded by the SEC13 homolog, nuclear pore and COPII coat complex component (SEC13), and is required for ER-Golgi transport. Monoubiquitylation of this protein by CUL3-KLHL12 was found to regulate the size of COPII coats to accommodate unusually shaped cargo. Alternative splicing results in multiple transcript variants encoding different isoforms. [provided by RefSeq, Dec 2015]

Product images:



Coomassie blue staining of purified SEC31A protein (Cat# TP316802). The protein was produced from HEK293T cells transfected with SEC31A cDNA clone (Cat# [RC216802]) using MegaTran 2.0 (Cat# [TT210002]).

