

Product datasheet for TP316782

TAT (NM_000353) Human Recombinant Protein

Product data:

Product Type:	Recombinant Proteins
Description:	Purified recombinant protein of Homo sapiens tyrosine aminotransferase (TAT), nuclear gene encoding mitochondrial protein
Species:	Human
Expression Host:	HEK293T
Expression cDNA	>RC216782 protein sequence
Clone or AA Sequence:	Red=Cloning site Green=Tags(s)

MDPYMIQMSSKGNLSSILDVHVNVGGRSSVPGKMKGRKARWSVRPSDMAKKTENPIRAIVDNMKVKPNPN
KTMISLSIGDPTVFGNLPTDPEVTQAMKDALDSGKYNGYAPSIGFLSSREEIASYYHCPEAPLEAKDVIL
TSGCSQAIDLCLAVLANPGQNILVPRPGFSLYKTLAESMGIEVKLYNLLPEKSWEIDLKQLEYLIDEKTA
CLIVNPNPSNPCGSVFSKRHLQKILAVAARQCVPILADEIYGDMVFSDCCKYEPLATLSTDVPILSCGGLAK
RWLVPGWRLGWILIHDRRDIFGNEIRDGLVKLSQRILGPCTIVQGALKSILCRTPGFEFYHNTLSFLKSNA
DLCYGALAAIPGLRPVRPSGAMYLMVGIEMEHFPEFENDVEFTERLVAEQSVHCLPATCFEYPNFIRVVI
TVPEVMMLEACSRIQEFCEQHYHCAEGSQEECDK

TRTRPLEQKLISEEDLAANDILDYKDDDDKV

Tag:	C-Myc/DDK
Predicted MW:	50.2 kDa
Concentration:	>50 ug/mL as determined by microplate BCA method
Purity:	> 80% as determined by SDS-PAGE and Coomassie blue staining
Buffer:	25 mM Tris.HCl, pH 7.3, 100 mM glycine, 10% glycerol
Preparation:	Recombinant protein was captured through anti-DDK affinity column followed by conventional chromatography steps.
Storage:	Store at -80°C.
Stability:	Stable for 12 months from the date of receipt of the product under proper storage and handling conditions. Avoid repeated freeze-thaw cycles.
RefSeq:	NP_000344
Locus ID:	6898



[View online >](#)

UniProt ID: [P17735](#), [A0A140VKB7](#)

RefSeq Size: 2757

Cytogenetics: 16q22.2

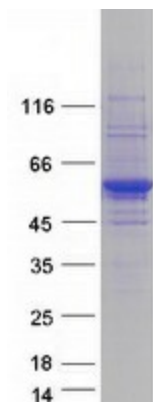
RefSeq ORF: 1362

Summary: This nuclear gene encodes a mitochondrial protein tyrosine aminotransferase which is present in the liver and catalyzes the conversion of L-tyrosine into p-hydroxyphenylpyruvate. Mutations in this gene cause tyrosinemia (type II, Richner-Hanhart syndrome), a disorder accompanied by major skin and corneal lesions, with possible cognitive disability. A regulator gene for tyrosine aminotransferase is X-linked. [provided by RefSeq, Jul 2008]

Protein Families: Druggable Genome, Embryonic stem cells, ES Cell Differentiation/IPS

Protein Pathways: Cysteine and methionine metabolism, Metabolic pathways, Phenylalanine, tyrosine and tryptophan biosynthesis, Phenylalanine metabolism, Tyrosine metabolism, Ubiquinone and other terpenoid-quinone biosynthesis

Product images:



Coomassie blue staining of purified TAT protein (Cat# TP316782). The protein was produced from HEK293T cells transfected with TAT cDNA clone (Cat# [RC216782]) using MegaTran 2.0 (Cat# [TT210002]).