

Product datasheet for **TP316775L**

MAP2 (NM_002374) Human Recombinant Protein

Product data:

Product Type:	Recombinant Proteins
Description:	Recombinant protein of human microtubule-associated protein 2 (MAP2), transcript variant 1, 1 mg
Species:	Human
Expression Host:	HEK293T



[View online »](#)

Expression cDNA Clone or AA Sequence: >RC216775 representing NM_002374
Red=Cloning site Green=Tags(s)

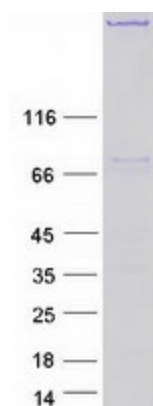
MADERKDEAKAPHWTSAPLTEASAHSHPEIKDQGGAGEGLVRSANGFPYREDEEGAFGEHGSQGTYSNT
 KENGINDELTSADRETAEEVSARIVQVVTAEAVAVLKGEQEKEAQHKDQTAALPLAAEETANLPPSPPPS
 PASEQTVTVEEDLLTASKMEFHDQQELTPSTAEPDQKEKESEKQSKPGEDLKHAALVSPETTCTYPTDK
 KDMQGTSEEEKAPLALFGHTLVASLEDMKQKTEPSLVVPGIDLKPEPPTPKEQKDWFIEMPTEAKKDEWGL
 VAPISPGPLTPMREKDVFDIPKWEGKQFDSPPSPFQGGSFLLPLDVMKNEIVTETSPFAPFLQPD
 KSLQQTSGPATAKDSFKIEEPHEAKPDKMAEAPPSEAMTLPKDAHIPVVEEHVMGKVLVEEKEAINQETV
 QQRDTFTPSGQEPILTEKETELKLEKTTISDKEAVPKESKPPKPADEEIGIIQTSTEHTFSEQKQDEPT
 TDMLKQDSFPVSLEQAVTDSAMTSKLEKAMTEPSALIEKSSIQELFEMRVDDKDKIEGVGAATSAELDM
 PFYEDKSGMSKYFETSALKEEATKSIPEGSDYYELSDTRESVHESIDTMSPMHKNGDKQFQTKESQSP
 PAQEAGYSTLAQSYPSDLPEEPSSPQERMFTIDPKVYGEKRDLSKKNKDDLTLRSRLGLGGRSAIEQRSM
 SINLPMSCLDLALGFNFRGHDLSPASDILNTSGSMDEGDDYLPATTPALEKAPCFPVESKEEQIE
 KVKATGEESTQAEISCESPFLAKDFYKNGTVMAPDLPEMLDLAGTRSLASVSADA EVARRKSVPSSETV
 EDSRTGLPPVTDENHVIVKTDSQLEDLGYCVFNKYTVPLPSPVQDSENLSGESGTFYEGTDDKVRRLAT
 DLSLIEVKLAAAGRVDKDEFSVDKEASAHISGDKSGLSKEFDQEKKANDRLDVTLEKSEEHADSKEHAKKT
 EEAGDEIETFGLVTYEQALAKDLSIPTDASSEKAEGKLVVPEIAEVEPSKKVEQGLDFAVQGQLDVKI
 SDFGQMASGLNIDRRATELKEATQDMTPSSKAPQEADAFMGVESGHMKEGTVKSETEVKQKVAKPDLV
 HQEAVDKESYESSGEHESLTMESLKADEGKKETSPESSLIQDEIAVKLSVEIPCAPPVSEADLATDERA
 DVQMEFIQGPKEESKETPDISITPSDVAEPLHETIVSEPAEIQSEEEIEAQGEYDKLLFRSDTLQITDL
 GVSGAREEFVETCPSEHKGVIKSVTIEDDFITVWQTTTDEGESGSHSVRFAALEQPEVERRRPSPHDEEE
 FEVEEAAEAQAEPKDGSPEAPASPEREEVALSEYKTETYDDYKDETTIDDSIMDADSLWVDTQDDDRSIM
 TEQLETIPKEEKAKEARRSSLEKHRKEKPKFTGRGRISTPERKVAKKEPSTVSRDEVRRKAVYKKAEL
 AKKTEVQAHSPSRKFIKPAIKYTRPHTLSCVCRKTTAAGGESALAPSVFKQAKDKVSDGVTKSPEKRSS
 LPRSSILPPRRGVSGDRDENSFSLNSSISSARRTRSEPIRRAGKSGTSTPTTPGSTAITPGTPPSYS
 SRTPGTPGTPSYRTPHTPGTPKSAILVPSEKVAIIRTPPKSPATPKQLRLINQPLPDLKNVSKIGST
 DNIKYQPKGGQVQIVTKKIDLSHVTSKCGSLKNIGHRPGGGRVKIESVKLDFEKAQAKVGLDNAHHVP
 GGGNVKIDSQKLNFRHAKARVDHGAEITQSPGRSSVASPRRLSNVSSSGSINLLESPQLATLAEDVTA
 ALAKQGL

TRTRPLEQKLISEEDLAANDILDYKDDDDKV

- Tag:** C-Myc/DDK
- Predicted MW:** 199.3 kDa
- Concentration:** >0.05 µg/µL as determined by microplate BCA method
- Purity:** > 80% as determined by SDS-PAGE and Coomassie blue staining
- Buffer:** 25 mM Tris-HCl, 100 mM glycine, pH 7.3, 10% glycerol
- Preparation:** Recombinant protein was captured through anti-DDK affinity column followed by conventional chromatography steps.
- Note:** For testing in cell culture applications, please filter before use. Note that you may experience some loss of protein during the filtration process.

Storage:	Store at -80°C.
Stability:	Stable for 12 months from the date of receipt of the product under proper storage and handling conditions. Avoid repeated freeze-thaw cycles.
RefSeq:	NP_002365
Locus ID:	4133
UniProt ID:	P11137 , Q6NYC5
RefSeq Size:	6534
Cytogenetics:	2q34
RefSeq ORF:	5481
Synonyms:	MAP-2; MAP2A; MAP2B; MAP2C
Summary:	This gene encodes a protein that belongs to the microtubule-associated protein family. The proteins of this family are thought to be involved in microtubule assembly, which is an essential step in neurogenesis. The products of similar genes in rat and mouse are neuron-specific cytoskeletal proteins that are enriched in dendrites, implicating a role in determining and stabilizing dendritic shape during neuron development. A number of alternatively spliced variants encoding distinct isoforms have been described. [provided by RefSeq, Jan 2010]
Protein Families:	Adult stem cells, Druggable Genome, ES Cell Differentiation/IPS

Product images:



Coomassie blue staining of purified MAP2 protein (Cat# [TP316775]). The protein was produced from HEK293T cells transfected with MAP2 cDNA clone (Cat# [RC216775]) using MegaTran 2.0 (Cat# [TT210002]).