

Product datasheet for TP316768L

COMMD5 (NM_001081003) Human Recombinant Protein

Product data:

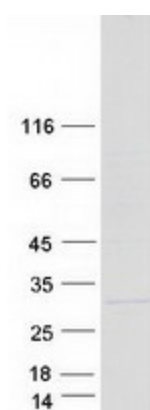
Product Type:	Recombinant Proteins
Description:	Recombinant protein of human COMM domain containing 5 (COMMD5), transcript variant 2, 1 mg
Species:	Human
Expression Host:	HEK293T
Expression cDNA Clone or AA Sequence:	>RC216768 protein sequence Red =Cloning site Green =Tags(s)
	MSAVGAATPYLHHPGDSSHSGRVSFLGAQLPPEVAAMARLLGDLDRSTFRKLLKFWSSLQGEDCREAVQR LGVSANLPPEQLGALLAGMHTLLQALRLPPTSLKPDTRDQLQELCIPQDLVGD LASVWFGSQRPLLD S VAQQGAWLPHVADFRWRVDVAISTALARS LQPSVLMQLKLS DGSAYRFEVPTAKFQELRYSVALVLKE MADLEKRCERRLQD
	TRTRPLEQKLISEEDLAANDILDYKDDDDKV
Tag:	C-Myc/DDK
Predicted MW:	24.5 kDa
Concentration:	>0.05 µg/µL as determined by microplate BCA method
Purity:	> 80% as determined by SDS-PAGE and Coomassie blue staining
Buffer:	25 mM Tris-HCl, 100 mM glycine, pH 7.3, 10% glycerol
Preparation:	Recombinant protein was captured through anti-DDK affinity column followed by conventional chromatography steps.
Note:	For testing in cell culture applications, please filter before use. Note that you may experience some loss of protein during the filtration process.
Storage:	Store at -80°C.
Stability:	Stable for 12 months from the date of receipt of the product under proper storage and handling conditions. Avoid repeated freeze-thaw cycles.
RefSeq:	NP_001074472
Locus ID:	28991



[View online »](#)

UniProt ID:	Q9GZQ3
RefSeq Size:	1453
Cytogenetics:	8q24.3
RefSeq ORF:	672
Synonyms:	HCARG; HT002
Summary:	May modulate activity of cullin-RING E3 ubiquitin ligase (CRL) complexes (PubMed:21778237). Negatively regulates cell proliferation. Negatively regulates cell cycle G2/M phase transition probably by transactivating p21/CDKN1A through the p53/TP53-independent signaling pathway. Involved in kidney proximal tubule morphogenesis (By similarity). Down-regulates activation of NF-kappa-B (PubMed:15799966).[UniProtKB/Swiss-Prot Function]
Protein Families:	Druggable Genome

Product images:



Coomassie blue staining of purified COMMD5 protein (Cat# [TP316768]). The protein was produced from HEK293T cells transfected with COMMD5 cDNA clone (Cat# [RC216768]) using MegaTran 2.0 (Cat# [TT210002]).