

## Product datasheet for TP316754L

### MLLT1 (NM\_005934) Human Recombinant Protein

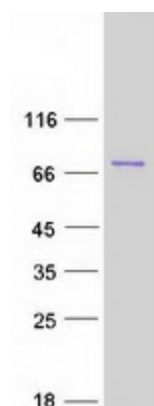
#### Product data:

|                                       |  |
|---------------------------------------|--|
| Product Type:                         | Recombinant Proteins   |
| Description:                          | Recombinant protein of human myeloid/lymphoid or mixed-lineage leukemia (trithorax homolog, Drosophila); translocated to, 1 (MLLT1), 1 mg  |
| Species:                              | Human  |
| Expression Host:                      | HEK293T  |
| Expression cDNA Clone or AA Sequence: | >RC216754 representing NM_005934<br><span style="color: red;">Red</span> =Cloning site <span style="color: green;">Green</span> =Tags(s)<br><br>MDNQCTVQVRLELGHRAQLRKKPTTEGFTHDWMVFVRGPEQCDIQHFVEKVFWLHDSFPKPRRVCKEPP<br>YKVEESGYAGFIMPIEVHFKNKEEPRKVCFTYDLFLNLEGNPPVNHLCRCEKLTENNPTTEFRYKLLRAGG<br>VMVMPEGADTVSRPSDYPMLPTIPLSAFSDPKKTKPSHGSKDANKESSKTSKPHKVTKEHRERPRKDSE<br>SKSSSKELEREQAKSSKDTSRKLGEGRLPKEEKAPPPKAAFKPKMALKETKLESTSPKGGPPPPPPPPPP<br>RASSKRPATADSPKPSAKKQKKSSSKGSRAPGTSPTSSSSSFSDKKPAKDKSSTRGEKVKAESEPREA<br>KKALEVEESNSEDEASFKSESAQSSPSNSSSSSDSSSDSDFEPSQNHQSQGPLRSMVEDLQSEESDEDDSS<br>SGEEAAGKTNPGRDSRLSFDSESDNSADSSLPSREPPPPQKPPPPNSKSVSGRRSPESCSKPEKILKKGT<br>YDKAYTDELVELHRRMLALRERNVLQQIVNLIETGHFNVNTTTFDFDLFSLDETTVRKLQSCLEAVAT<br><br><span style="color: red;">SGPTRTRRLE</span> <span style="color: green;">QKLISEEDLA</span> <span style="color: green;">NDILDYKDDDDK</span> <span style="color: green;">V</span> |
| Tag:                                  | C-Myc/DDK  |
| Predicted MW:                         | 61.9 kDa   |
| Concentration:                        | >0.05 µg/µL as determined by microplate BCA method   |
| Purity:                               | > 80% as determined by SDS-PAGE and Coomassie blue staining  |
| Buffer:                               | 25 mM Tris-HCl, 100 mM glycine, pH 7.3, 10% glycerol   |
| Preparation:                          | Recombinant protein was captured through anti-DDK affinity column followed by conventional chromatography steps.   |
| Note:                                 | For testing in cell culture applications, please filter before use. Note that you may experience some loss of protein during the filtration process.   |
| Storage:                              | Store at -80°C.  |


[View online »](#)

|                          |  |
|--------------------------|--|
| <b>Stability:</b>        | Stable for 12 months from the date of receipt of the product under proper storage and handling conditions. Avoid repeated freeze-thaw cycles.  |
| <b>RefSeq:</b>           | <u><a href="#">NP_005925</a></u>   |
| <b>Locus ID:</b>         | 4298   |
| <b>UniProt ID:</b>       | <u><a href="#">Q03111</a></u>  |
| <b>RefSeq Size:</b>      | 1974   |
| <b>Cytogenetics:</b>     | 19p13.3  |
| <b>RefSeq ORF:</b>       | 1677   |
| <b>Synonyms:</b>         | ENL; LTG19; YEATS1   |
| <b>Summary:</b>          | Component of the super elongation complex (SEC), a complex required to increase the catalytic rate of RNA polymerase II transcription by suppressing transient pausing by the polymerase at multiple sites along the DNA.[UniProtKB/Swiss-Prot Function] |
| <b>Protein Families:</b> | Druggable Genome, Transcription Factors  |

### Product images:



Coomassie blue staining of purified MLLT1 protein (Cat# [TP316754]). The protein was produced from HEK293T cells transfected with MLLT1 cDNA clone (Cat# [RC216754]) using MegaTran 2.0 (Cat# [TT210002]).