

Product datasheet for **TP316754**

MLLT1 (NM_005934) Human Recombinant Protein

Product data:

Product Type: Recombinant Proteins
Description: Recombinant protein of human myeloid/lymphoid or mixed-lineage leukemia (trithorax homolog, Drosophila); translocated to, 1 (MLLT1), 20 µg
Species: Human
Expression Host: HEK293T
Expression cDNA Clone or AA Sequence: >RC216754 representing NM_005934
Red=Cloning site **Green**=Tags(s)

MDNQCTVQVRLELGHRAQLRKKPTTEGFTHDWMVVRGPEQCDIQHFVEKVVFWLHDSFPKPRRVCKEPP
YKVEESGYAGFIMPIEVHFKNKEEPKVCFTYDLFLNLEGNPPVNHLCRCEKLTFFNNPTTEFRYKLLRAGG
VMVMPEGADTVSRSPDYPMPLPTIPLSAFSDPKKTKPSHGSKDANKESSKTSKPHKVTKEHRERPRKDSE
SKSSSKELEREQAKSSKDTSRKLGEGRLPKEEKAPPPKAAFKEPKMALKETKLESTSPKGGPPPPPPPP
RASSKR PATADSPKPSAKKQKKSSSKGSR SAPGTSPRTSSSSSFSDKKPAKDKSSTRGEKVKA ESEPREA
KKALEVEESNSEDEASFKSESAQSSPSNSSSSSDSSSDSDFEPSQNH SQGPLRSMVEDLQSEESDEDDSS
SGEEAAGKTNPGRDSRSLFSDES DNSADSSLPSREPPPPQKPPPPNSK VSGRRSPESCSKPEKILKKG T
YDKAYTDELVELHRRMLALRERNVLQQIVN LIEETGHFNVTNTTDFDFLFLSLETTVRK LQSCLEAVAT

SGPTRRRLEQKLISEEDLAANDILDYKDDDDKV

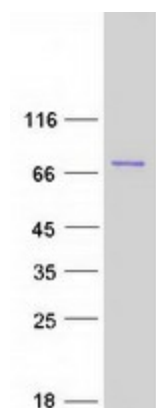
Tag: C-Myc/DDK
Predicted MW: 61.9 kDa
Concentration: >0.05 µg/µL as determined by microplate BCA method
Purity: > 80% as determined by SDS-PAGE and Coomassie blue staining
Buffer: 25 mM Tris-HCl, 100 mM glycine, pH 7.3, 10% glycerol
Preparation: Recombinant protein was captured through anti-DDK affinity column followed by conventional chromatography steps.
Note: For testing in cell culture applications, please filter before use. Note that you may experience some loss of protein during the filtration process.
Storage: Store at -80°C.



[View online »](#)

Stability:	Stable for 12 months from the date of receipt of the product under proper storage and handling conditions. Avoid repeated freeze-thaw cycles.
RefSeq:	NP_005925
Locus ID:	4298
UniProt ID:	Q03111
RefSeq Size:	1974
Cytogenetics:	19p13.3
RefSeq ORF:	1677
Synonyms:	ENL; LTG19; YEATS1
Summary:	Component of the super elongation complex (SEC), a complex required to increase the catalytic rate of RNA polymerase II transcription by suppressing transient pausing by the polymerase at multiple sites along the DNA.[UniProtKB/Swiss-Prot Function]
Protein Families:	Druggable Genome, Transcription Factors

Product images:



Coomassie blue staining of purified MLLT1 protein (Cat# TP316754). The protein was produced from HEK293T cells transfected with MLLT1 cDNA clone (Cat# [RC216754]) using MegaTran 2.0 (Cat# [TT210002]).