

## Product datasheet for **TP316753L**

### **EFEMP1 (NM\_001039348) Human Recombinant Protein**

#### Product data:

Product Type:	Recombinant Proteins
Description:	Recombinant protein of human EGF-containing fibulin-like extracellular matrix protein 1 (EFEMP1), transcript variant 2, 1 mg
Species:	Human
Expression Host:	HEK293T
Expression cDNA Clone or AA Sequence:	>RC216753 protein sequence <b>Red</b> =Cloning site <b>Green</b> =Tags(s)

MLKALFLTMLTLALVKSQDTEETITYTQCTDGYEWDVPRQCKDIDECDIVPDACKGGMKCVNHYGGYLC  
LPKTAQIIVNNEQPQQETQPAEGTSGATTGVVAASSMATSGVLPGGGFVASAAVAGPEMQTGRNNFVIR  
RNPADPQRIPSNPSHRIQCAAGYEQSEHNVCQDIDECTAGTHNCRADQVCINLRGSFACQCPPGYQKRGE  
QCVDIDECTIPPYCHQRCVNTPGSFYQCSPGFQLAANNYTCVDINECDASNQCAQQCYNILGSFICQCN  
QGYELSSDRLNCEDIDECRTSSYLCQYQCVNEPGKFCMCPQGYQVRSRTCQDINECETTNECREDEMC  
WNYHGGFRCPYPRNPCQDPYILTPENRCVCPVSNAMCRELPQSIVYKYSIRSRSVPSDIFQIQATTIYA  
NTINTFRIKSGNENGEFYLRQTSPVSAMLVLVKSLSGPREHIVDLEMLTVSSIGTFRRTSSVLRLLTIIVGP  
FSF

**TRTRPLEQKLISEEDLAANDILDYKDDDDKV**

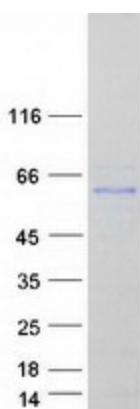
Tag:	C-Myc/DDK
Predicted MW:	52.7 kDa
Concentration:	>0.05 µg/µL as determined by microplate BCA method
Purity:	> 80% as determined by SDS-PAGE and Coomassie blue staining
Buffer:	25 mM Tris-HCl, 100 mM glycine, pH 7.3, 10% glycerol
Preparation:	Recombinant protein was captured through anti-DDK affinity column followed by conventional chromatography steps.
Note:	For testing in cell culture applications, please filter before use. Note that you may experience some loss of protein during the filtration process.
Storage:	Store at -80°C.



[View online »](#)

<b>Stability:</b>	Stable for 12 months from the date of receipt of the product under proper storage and handling conditions. Avoid repeated freeze-thaw cycles.
<b>RefSeq:</b>	<a href="#">NP_001034437</a>
<b>Locus ID:</b>	2202
<b>UniProt ID:</b>	<a href="#">Q12805</a> , <a href="#">A0A0S2Z4F1</a> , <a href="#">B2R6M6</a>
<b>RefSeq Size:</b>	3094
<b>Cytogenetics:</b>	2p16.1
<b>RefSeq ORF:</b>	1479
<b>Synonyms:</b>	DHRD; DRAD; FBLN3; FBNL; FIBL-3; MLVT; MTLV; S1-5
<b>Summary:</b>	This gene encodes a member of the fibulin family of extracellular matrix glycoproteins. Like all members of this family, the encoded protein contains tandemly repeated epidermal growth factor-like repeats followed by a C-terminus fibulin-type domain. This gene is upregulated in malignant gliomas and may play a role in the aggressive nature of these tumors. Mutations in this gene are associated with Doyme honeycomb retinal dystrophy. Alternatively spliced transcript variants that encode the same protein have been described.[provided by RefSeq, Nov 2009]
<b>Protein Families:</b>	Secreted Protein

### Product images:



Coomassie blue staining of purified EFEMP1 protein (Cat# [TP316753]). The protein was produced from HEK293T cells transfected with EFEMP1 cDNA clone (Cat# [RC216753]) using MegaTran 2.0 (Cat# [TT210002]).