

## Product datasheet for TP316745M

### WDHD1 (NM\_007086) Human Recombinant Protein

#### Product data:

Product Type:	Recombinant Proteins
Description:	Recombinant protein of human WD repeat and HMG-box DNA binding protein 1 (WDHD1), transcript variant 1, 100 µg
Species:	Human
Expression Host:	HEK293T
Expression cDNA Clone or AA Sequence:	>RC216745 representing NM_007086 <b>Red</b> =Cloning site <b>Green</b> =Tags(s)

MPATRKPMRYGHTTEGHTVEVCFDDSGSFIVTCGSDGDVRIWEDLDDDDPKFINVGEKAYSCALKSGKLVTA  
VSNNTIQVHTFPEGVPDILTRFTTNANHVVFNGDGTKIAAGSSDFLVKIVDVMSSQKQKTRGRHDAPVL  
SLSFDPKIDIFLASASCDGSVRVWQISDQTCASWPLLQKCNVDVINAKSICRLAWQPKSGKLLAIPVEKSV  
KLYRRESWSHQFDLSDNFISQTLNIVTWSPCGQYLAAGSINGLIIVWNVETKDCMERVKHEKGYAICGLA  
WHPTCGRISYTD AEGNLGLENVCDPSGKTSSSKVSSRVEKDYNDLFDGDDMSNAGDFLNDNAVEIPFSF  
KGIINDEDEDLMMASGRPRQRSHILEDDENSVDISMLKTGSSLLKEEEDGQEGSIHNLPLVTSQRPF  
YDGPMPTRQKPFQSGSTPLHLTHRFMVVNSIGIIRCYNDEQDNAIDVEFHDTSIHHATHLSNTLNITIA  
DLSHEAILLACESTDELASKLHCLHFSSWDSSKEWIIDLQPNEDIEAICLGQGWAAAATSALLLRLFTIG  
GVQKEVFSLAGPVVSMAGHGEQLFIVYHRGTGFDGDQCLGVQLLELGKKKQILHGDPLPLTRKSYLAWI  
GFS AEGTPCYVDSEGIVRMLNRLGNTWTPICNTRHCKGKSDHYWVGIHENPQQLRCIPCKGSRFPPT  
LPRPAVAILSFKLPYCQIATEKGQMEEQFWRVIFHNHLDYLAKNGYEYEESTKNQATKEQQELLMKMLA  
LSCKLEREFRCVELADLMTQNAVNLAIKYASRSRKLILAQKLSLAVEKAAELTATQVEEEEEEEEDFRKK  
LNAGYSNTATEWSQPRFRNQVEEDAEDSGEADDEEKPEIHKPGQNSFSKSTNSSDVS AKSGAVTFSSQGR  
VNPFKVSASSKEPAMSMNSARSTNILDNMGKSSKSTALSRTTNNEKSPIIKPLIPKPKPKQASAASYFQ  
KRNSQTNKTEEVKEENLKNVLSETPAICPPQNTENQRPKTGFMWLEENRSNILSDNPDFSDEADIIKEG  
MIRFRVLSTEERKVVANKAKGETASEGTEAKKRKRVDSEDETENQEEKAKENLNL SKKQKPLDFSTNQK  
LSAFAFKQE

**TRTRPLEQKLISEEDLAANDILDYKDDDDKV**

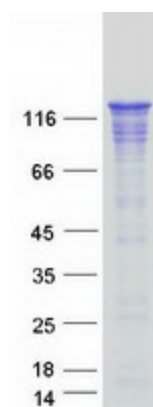
Tag:	C-Myc/DDK
Predicted MW:	125.8 kDa
Concentration:	>0.05 µg/µL as determined by microplate BCA method
Purity:	> 80% as determined by SDS-PAGE and Coomassie blue staining



[View online »](#)

<b>Buffer:</b>	25 mM Tris-HCl, 100 mM glycine, pH 7.3, 10% glycerol
<b>Preparation:</b>	Recombinant protein was captured through anti-DDK affinity column followed by conventional chromatography steps.
<b>Note:</b>	For testing in cell culture applications, please filter before use. Note that you may experience some loss of protein during the filtration process.
<b>Storage:</b>	Store at -80°C.
<b>Stability:</b>	Stable for 12 months from the date of receipt of the product under proper storage and handling conditions. Avoid repeated freeze-thaw cycles.
<b>RefSeq:</b>	<a href="#">NP_009017</a>
<b>Locus ID:</b>	11169
<b>UniProt ID:</b>	<a href="#">O75717</a>
<b>RefSeq Size:</b>	4734
<b>Cytogenetics:</b>	14q22.2-q22.3
<b>RefSeq ORF:</b>	3387
<b>Synonyms:</b>	AND-1; AND1; CHTF4; CTF4
<b>Summary:</b>	The protein encoded by this gene contains multiple N-terminal WD40 domains and a C-terminal high mobility group (HMG) box. WD40 domains are found in a variety of eukaryotic proteins and may function as adaptor/regulatory modules in signal transduction, pre-mRNA processing and cytoskeleton assembly. HMG boxes are found in many eukaryotic proteins involved in chromatin assembly, transcription and replication. Alternative splicing results in two transcript variants encoding different isoforms. [provided by RefSeq, Jul 2008]
<b>Protein Families:</b>	Druggable Genome, Transcription Factors

### Product images:



Coomassie blue staining of purified WDHD1 protein (Cat# [TP316745]). The protein was produced from HEK293T cells transfected with WDHD1 cDNA clone (Cat# [RC216745]) using MegaTran 2.0 (Cat# [TT210002]).