

Product datasheet for TP316745L

WDHD1 (NM_007086) Human Recombinant Protein

Product data:

Product Type:	Recombinant Proteins
Description:	Recombinant protein of human WD repeat and HMG-box DNA binding protein 1 (WDHD1), transcript variant 1, 1 mg
Species:	Human
Expression Host:	HEK293T
Expression cDNA Clone or AA Sequence:	>RC216745 representing NM_007086 Red =Cloning site Green =Tags(s)

MPATRKPMRYGHTTEGHTVEVCFDDSGSFIVTCGSDGDVRIWEDLDDDDPKFINVGEKAYSCALKSGKLVTA
VSNNTIQVHTFPEGVPDGILTRFTTNANHVVFNGDGTKIAAGSSDFLVKIVDVMSSQKQTFRGHDAPVL
SLSFDPKDFLASASCDGSVRVWQISDQTCASWPLLQKCNVDVINAKSICRLAWQPKSGKLLAIPVEKSV
KLYRRESWSHQFDLSDNFISQTLNIVTWSPCGQYLAAGSINGLIIVWNVETKDCMERVKHEKGYAICGLA
WHPTCGRISYTD AEGNLGLENVCDPSGKTSSSKVSSRVEKDYNDLFDGDDMSNAGDFLNDNAVEIPFSF
KGIINDEDEDLMMASGRPRQRSHILEDDENSVDISMLKTGSSLLKEEEDGQEGSIHNLPLVTSQRPF
YDGPMPTRQKPFQSGSTPLHLTHRFMVVNSIGIIRCYNDEQDNAIDVEFHDTSIHHATHLSNTLNITIA
DLSHEAILLACESTDELASKLHCLHFSSWDSSKEWIIDLQPNEDIEAICLGQGWAAAATSALLLRLFTIG
GVQKEVFLAGPVVSMAGHGEQLFIVYHRGTGFDGDQCLGVQLLELGKKKQILHGDPLPLTRKSYLAWI
GFSAEGTPCYVDSEGIVRMLNRGLGNTWTPICNTRHCKGKSDHYWVGIHENPQQLRCIPCKGSRFPPT
LPRPAVAILSFKLPYCQIATEKGQMEEQFWRVIFHNHLDYLAKNGYEYEESTKNQATKEQQELLMKMLA
LSCKLEREFRCVELADLMTQNAVNLAIKYASRSRKLILAQKLSLAVEKAAELTATQVEEEEEEDFRKK
LNAGYSNTATEWSQPRFRNQVEEDAEDSGEADDEEKPEIHKPGQNSFSKSTNSSDVSAKSGAVTFSSQGR
VNPFKVSASSKEPAMSMNSARSTNILDNMGKSSKSTALSRTTNNEKSPHKLIPKPKPKQASAASYFQ
KRNSQTNKTEEVKEENLKNVLSETPAICPPQNTENQRPKTGFMWLEENRSNILSDNPDFSDEADIIKEG
MIRFRVLSTEERKVVANKAKGETASEGTEAKKRKRVDSEDETENQEEKAKENLNLSKKQKPLDFSTNQK
LSAFAFKQE

TRTRPLEQKLISEEDLAANDILDYKDDDDKV

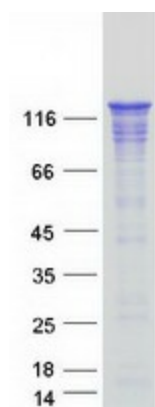
Tag:	C-Myc/DDK
Predicted MW:	125.8 kDa
Concentration:	>0.05 µg/µL as determined by microplate BCA method
Purity:	> 80% as determined by SDS-PAGE and Coomassie blue staining



[View online »](#)

Buffer:	25 mM Tris-HCl, 100 mM glycine, pH 7.3, 10% glycerol
Preparation:	Recombinant protein was captured through anti-DDK affinity column followed by conventional chromatography steps.
Note:	For testing in cell culture applications, please filter before use. Note that you may experience some loss of protein during the filtration process.
Storage:	Store at -80°C.
Stability:	Stable for 12 months from the date of receipt of the product under proper storage and handling conditions. Avoid repeated freeze-thaw cycles.
RefSeq:	NP_009017
Locus ID:	11169
UniProt ID:	O75717
RefSeq Size:	4734
Cytogenetics:	14q22.2-q22.3
RefSeq ORF:	3387
Synonyms:	AND-1; AND1; CHTF4; CTF4
Summary:	The protein encoded by this gene contains multiple N-terminal WD40 domains and a C-terminal high mobility group (HMG) box. WD40 domains are found in a variety of eukaryotic proteins and may function as adaptor/regulatory modules in signal transduction, pre-mRNA processing and cytoskeleton assembly. HMG boxes are found in many eukaryotic proteins involved in chromatin assembly, transcription and replication. Alternative splicing results in two transcript variants encoding different isoforms. [provided by RefSeq, Jul 2008]
Protein Families:	Druggable Genome, Transcription Factors

Product images:



Coomassie blue staining of purified WDHD1 protein (Cat# [TP316745]). The protein was produced from HEK293T cells transfected with WDHD1 cDNA clone (Cat# [RC216745]) using MegaTran 2.0 (Cat# [TT210002]).