

## Product datasheet for TP316742

### Symplekin (SYMPK) (NM\_004819) Human Recombinant Protein

#### Product data:

Product Type:	Recombinant Proteins
Description:	Recombinant protein of human symplekin (SYMPK), 20 µg
Species:	Human
Expression Host:	HEK293T
Expression cDNA Clone or AA Sequence:	>RC216742 representing NM_004819 Red=Cloning site Green=Tags(s)

MASGSGDSVTRRSVASQFFTQEEGPGIDGMITTSERVDLLNQAALITNDSKITVLKQVQELIINKDPTLL  
DNFLDEIIAFQADKSIEVRKFKVIGFIEEACKRDIELLLKLIANLNMLLRDENVNVVKKAILTMTQLYKVA  
LQWMVKSRISELQEACWDMVMSAMAGDIILLLDSDNDGIRTHAIKFVEGLIVTSPRMADSEIPRRQEH  
ISLDRIPRDHPYIQYNVLWEEGKAALEQLLKFMVHPAISSINLTALGSLANIARQRPMFMSEVIQAYET  
LHANLPPTLAKSQVSSVRKNLKLHLLSVLKHPASLEFQAQITLLVLDLGTQPQAEIARNMPSSKDTRKRPR  
DDSDTLKMKLEPNLGEDDEDKLEPGPSGTSKASAQISGQSDTDITAEFLQPLTPDNVANLVLISMV  
YLPEAMPASFQAIYTPVESAGTEAQIKHLARLMATQMTAAGLPGVEQTKQCKEEPKEEKVVKTESVLIK  
RRLSAQGQAISVWGLSSMSPLEEEAPQAKRRPEPIIPVTQPRLAGAGGRKKIFRLSDVLKPLTDAQVEA  
MKLGAVKRILRAEKAVACSGAAQVRIKILASLVTQFNSGLKAEVLSFILEDVRARLDLAFAWLYQEYNAY  
LAAGASGSLDKYEDCLIRLLSGLQEKPDQKDGIFTKVLEAPLITESALEVVRKYCEDERTYLG MSTLR  
DLIFKRPSRQFQYLHVLLDLSSHEKDKVRSQALLFIKRMYEKEQLREYVEKFALNYLQLLVHPNPPSVLF  
GADKDTEVAAPWTEETVKQCLYLYLALLPQNHKLIHELAAYTEAIADIKRTVLRVIEQPIRGMGMNSPE  
LLLLVENC PKGAETLVTRCLHSLTDKVPSPPELVKRVRDLYHKRLPDVRFLIPVLNGLKKEVIQALPKL  
IKLNPIVWKEVFNRLGTQHGE GNSALSPLNPGELLIALHNIDSVKCDMKSIIKATNLCFAERNVYTSEV  
LAVVMQQLMEQSPLPMLLMRTVIQSLTMYPRLGGMNLSRLIMKQVWKYPKVVWEGFIKCCQRTKPSF  
QVILQLPPQQLGAVFDKCPREPLLAHVRSFTPHQQAHIPNSIMTILEASGKQPEAKEAPAGPLEEDD  
LEPLTLAPAPAPRPPQDLIGLRLAQEKALKRQLEEEQKLPKGGVVGAPSSSSPSPSPSARPGPPPSEAMD  
FREEGPECETPGIFISMDDDSGLTEAALLDSSLEGPLPKETAAGGLTLKEERSPQTLAPVGEDAMKTPSP  
AAEDAREPEAKGNS

TRTRPLEQKLISEEDLAANDILDYKDDDDKV

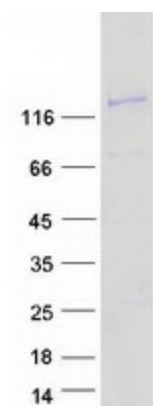
Tag:	C-Myc/DDK
Predicted MW:	141 kDa
Concentration:	>0.05 µg/µL as determined by microplate BCA method



[View online »](#)

<b>Purity:</b>	> 80% as determined by SDS-PAGE and Coomassie blue staining
<b>Buffer:</b>	25 mM Tris-HCl, 100 mM glycine, pH 7.3, 10% glycerol
<b>Preparation:</b>	Recombinant protein was captured through anti-DDK affinity column followed by conventional chromatography steps.
<b>Note:</b>	For testing in cell culture applications, please filter before use. Note that you may experience some loss of protein during the filtration process.
<b>Storage:</b>	Store at -80°C.
<b>Stability:</b>	Stable for 12 months from the date of receipt of the product under proper storage and handling conditions. Avoid repeated freeze-thaw cycles.
<b>RefSeq:</b>	<a href="#">NP_004810</a>
<b>Locus ID:</b>	8189
<b>UniProt ID:</b>	<a href="#">Q92797</a> , <a href="#">A0A024R0R6</a>
<b>RefSeq Size:</b>	4188
<b>Cytogenetics:</b>	19q13.32
<b>RefSeq ORF:</b>	3822
<b>Synonyms:</b>	Pta1; SPK; SYM
<b>Summary:</b>	This gene encodes a nuclear protein that functions in the regulation of polyadenylation and promotes gene expression. The protein forms a high-molecular weight complex with components of the polyadenylation machinery. It is thought to serve as a scaffold for recruiting regulatory factors to the polyadenylation complex. It also participates in 3'-end maturation of histone mRNAs, which do not undergo polyadenylation. The protein also localizes to the cytoplasmic plaques of tight junctions in some cell types. [provided by RefSeq, Jul 2008]
<b>Protein Pathways:</b>	Tight junction

### Product images:



Coomassie blue staining of purified SYMPK protein (Cat# TP316742). The protein was produced from HEK293T cells transfected with SYMPK cDNA clone (Cat# [RC216742]) using MegaTran 2.0 (Cat# [TT210002]).