

Product datasheet for **TP316722L**

ITGA11 (NM_001004439) Human Recombinant Protein

Product data:

Product Type:	Recombinant Proteins
Description:	Recombinant protein of human integrin, alpha 11 (ITGA11), 1 mg
Species:	Human
Expression Host:	HEK293T
Expression cDNA Clone or AA Sequence:	>RC216722 representing NM_001004439 Red=Cloning site Green=Tags(s)

MDLPRGLVVAWALSLWPGFTDTFNMDTRKPRVIPGSRTAFFGYTVQQHDISGNKWLWVGAPLETNGYQKT
GDVYKCPVIHGNCTKLNLRVTLNSVSRKDNMRLGSLATNPKDNSFLACSPLWSHECGSSYYTTGMCS
RVNSNFRFSKTVAPALQRCQTYMDIVIVLDGNSIYPWVEVQHFLINILKKFYIGPGQIQVGVVQYGEDV
VHEFHLNDYRSVKDWVEAASHIEQRGGTETRTAFGIEFARSEAFQKGGRKGAKKVMIVITDGESHDSPDL
EKVIQQSERDNVTRYAVAVLGYNNRRGINPETFLNEIKYIASDPDDKHFFNVTDAAALKDIVDALGDRIF
SLEGTNKNETSFGLEMSQTGFSSHVEDGVLLGAVGAYDWNGAVLKETSAGKVIPLRESYLKEFPEELKN
HGAYLGYTVTSVSSRQGRVYVAGAPRFNHTGKVLFTMHNNRSLTIHQAMRGQIQGSYFGSEITSVDID
GDGVTDVLLVGAPMYFNEGRERGRKVVYELRQNLVFNGLTKDSHSYQNFARFGSSIASVRDLNQDSYNDV
VVGAPLEDNHAGAIYIFHGFGRSILKTPKQRITASELATGLQYFGCSIHGQLDLNEDGLIDLAVGALGNA
VILWSRPVQINASLHFEPKINIFHRDCKRSGRDATCLAAFLCFTPIFLAPHFQTTTVGIRYNATMDER
RYTPRAHLDEGGDRFTNRAVLLSSGQELCERINFHVLDTADYVKPVTFSVEYSLEDPDHGPMLDDGWPTT
LRVSVPFWNGCNEDEHCVPDLVLDARSIDLPTAMEYQVRVLRKPAQDCSAYTSLFDTTVFIIESTRQRVAV
EATLENRGENAYSTVLNISQSANLQFASLIQKEDSDGSIQVNEERRLQKQVCNVSYPFFRAKAKVAFRL
DFEFSKIFLHHLEIELAAGSDSNERDSTKEDNVAPLRFHLKYEADVLFTRSSSLSHYEVKPNSSLERYD
GIGPPFSCIFRIQNLGLFPIHGMMMKITIPIATRSRGNLLKLRDFLTDEANTSCNIWGNSTEYRPTPVEE
DLRRAPQLNHSNSDVVSINCNIRLVPNQEINFHLLGNLWLRSLKALKYKSMKIMVNAALQRQFHSPIFIR
EEDPSRQIVFEISKQEDWQVPIWIIVGSTLGLLLLLALLVLALWKLGFFRSARRRRREPGLDPTPKVLE

TRTRPLEQKLISEEDLAANDILDYKDDDDKV

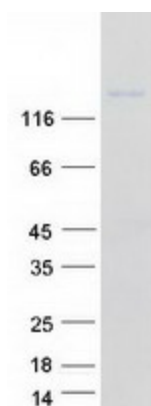
Tag:	C-Myc/DDK
Predicted MW:	131 kDa
Concentration:	>0.05 µg/µL as determined by microplate BCA method
Purity:	> 80% as determined by SDS-PAGE and Coomassie blue staining
Buffer:	25 mM Tris-HCl, 100 mM glycine, pH 7.3, 10% glycerol



[View online »](#)

Preparation:	Recombinant protein was captured through anti-DDK affinity column followed by conventional chromatography steps.
Note:	For testing in cell culture applications, please filter before use. Note that you may experience some loss of protein during the filtration process.
Storage:	Store at -80°C.
Stability:	Stable for 12 months from the date of receipt of the product under proper storage and handling conditions. Avoid repeated freeze-thaw cycles.
RefSeq:	NP_001004439
Locus ID:	22801
UniProt ID:	Q9UKX5 , B3KTN6
RefSeq Size:	5035
Cytogenetics:	15q23
RefSeq ORF:	3564
Synonyms:	HsT18964
Summary:	This gene encodes an alpha integrin. Integrins are heterodimeric integral membrane proteins composed of an alpha chain and a beta chain. This protein contains an I domain, is expressed in muscle tissue, dimerizes with beta 1 integrin in vitro, and appears to bind collagen in this form. Therefore, the protein may be involved in attaching muscle tissue to the extracellular matrix. Alternative transcriptional splice variants have been found for this gene, but their biological validity is not determined. [provided by RefSeq, Jul 2008]
Protein Families:	Druggable Genome, Transmembrane
Protein Pathways:	Arrhythmogenic right ventricular cardiomyopathy (ARVC), Dilated cardiomyopathy, ECM-receptor interaction, Focal adhesion, Hypertrophic cardiomyopathy (HCM), Regulation of actin cytoskeleton

Product images:



Coomassie blue staining of purified ITGA11 protein (Cat# [TP316722]). The protein was produced from HEK293T cells transfected with ITGA11 cDNA clone (Cat# [RC216722]) using MegaTran 2.0 (Cat# [TT210002]).