

## Product datasheet for TP316722

### ITGA11 (NM\_001004439) Human Recombinant Protein

#### Product data:

Product Type:	Recombinant Proteins
Description:	Recombinant protein of human integrin, alpha 11 (ITGA11), 20 µg
Species:	Human
Expression Host:	HEK293T
Expression cDNA Clone or AA Sequence:	>RC216722 representing NM_001004439 Red=Cloning site Green=Tags(s)

MDLPRGLVVAWALSLWPGFTDTFNMDTRKPRVIPGSRTAFFGYTVQQHDISGNKWLVGAPLETNGYQ  
KT  
GDVYKCPVIHGNCTKLNLRVTLNLSERKDNMRLGLSLATNPKDNSFLACSPLWSHECGSSYYTTGMCS  
RVNSNFRFSKTVAPALQRCQTYMDIVIVLDGNSIYPWVEVQHFLINILKKFYIGPGQIQVGVVQYGEDV  
VHEFHLNDYRSVKDWEAASHIEQRGGTETRTAFGIEFARSEAFQKGGKRGAKKVMIVITDGESHDSPDL  
EKVIQQSERDNVTRYAVAVLGYNRRGINPETFLNEIKYIASDPDDKHFFNVTDEAALKDIVDALGDRIF  
SLEGTNKNETSFGLEMSQTGFSSHVVEDGVLLGAVGAYDWNGAVLKETSAGKVIPLRESYLKEFPEELKN  
HGAYLGYTVTSVSSRQGRVYVAGAPRFNHTGKILFTMHNNRSLTIHQAMRGQQIGSYFGSEITSVDID  
GDGVTDVLLVGAPMYFNEGRERGGKVVYELRQNLVYNGTLKDSHSYQNARFGSSIASVRDLNQDSYND  
V  
VVGAPLEDNHAGAIYIFHGFRGSILKTPKQRITASELATGLQYFGCSIHGQLDLNEDGLIDLAVGALGNA  
VILWSRPVQINASLHFEPKINIFHRDCKRSGRDATCLAAFLCFTPIFLAPHFQTTTVGIRYNATMDER  
RYTPRAHLDEGGDRFTNRAVLLSSGQELCERINFHVLDADYVYKPVTFVSVEYSLEDPDHGPMDDGWPTT  
LRVSPFWNGCNEDEHCVPLVLDARSDLPAMEYQQRVLRKPAQDCSAYTSLFDTTVFIIESTRQRVAV  
EATLENRGENAYSTVLNISQSANLQFASLIQKEDSDGSIQVNEERRLQKQVCNVSYPPFRKAKVAFRL  
DFEFSKSIPLHLEIELAAGSDSNERDSTKEDNVAPLRFHLKYEADVLFRSSSLSHYEVKPNSSLERYD  
GIGPPFSCIFRIQNLGLFPIHGMMMKITIPIATRSGNRLKLRDFTLDEANTSCNIWGNSTEYRPTPVVE  
DLRRAPQLNHSNSDVVSINCNIRLVPNQEIFHLLGNLWLRSLKALKYKSMKIMVNAALQRQFHSPFIFR  
EEDPSRQIVFEISKQEDWQVPIIIVGSLGGLLLLALLVLALWKLGFRRSARRRREPGLDPTPKVLE

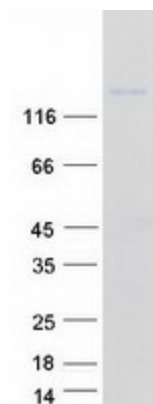
TRTRPLEQKLISEEDLAANDILDYKDDDDKV

Tag:	C-Myc/DDK
Predicted MW:	131 kDa
Concentration:	>0.05 µg/µL as determined by microplate BCA method



[View online »](#)

<b>Purity:</b>	> 80% as determined by SDS-PAGE and Coomassie blue staining
<b>Buffer:</b>	25 mM Tris-HCl, 100 mM glycine, pH 7.3, 10% glycerol
<b>Preparation:</b>	Recombinant protein was captured through anti-DDK affinity column followed by conventional chromatography steps.
<b>Note:</b>	For testing in cell culture applications, please filter before use. Note that you may experience some loss of protein during the filtration process.
<b>Storage:</b>	Store at -80°C.
<b>Stability:</b>	Stable for 12 months from the date of receipt of the product under proper storage and handling conditions. Avoid repeated freeze-thaw cycles.
<b>RefSeq:</b>	<a href="#">NP_001004439</a>
<b>Locus ID:</b>	22801
<b>UniProt ID:</b>	<a href="#">Q9UKX5</a>
<b>RefSeq Size:</b>	5035
<b>Cytogenetics:</b>	15q23
<b>RefSeq ORF:</b>	3564
<b>Synonyms:</b>	HsT18964
<b>Summary:</b>	This gene encodes an alpha integrin. Integrins are heterodimeric integral membrane proteins composed of an alpha chain and a beta chain. This protein contains an I domain, is expressed in muscle tissue, dimerizes with beta 1 integrin in vitro, and appears to bind collagen in this form. Therefore, the protein may be involved in attaching muscle tissue to the extracellular matrix. Alternative transcriptional splice variants have been found for this gene, but their biological validity is not determined. [provided by RefSeq, Jul 2008]
<b>Protein Families:</b>	Druggable Genome, Transmembrane
<b>Protein Pathways:</b>	Arrhythmogenic right ventricular cardiomyopathy (ARVC), Dilated cardiomyopathy, ECM-receptor interaction, Focal adhesion, Hypertrophic cardiomyopathy (HCM), Regulation of actin cytoskeleton

**Product images:**

Coomassie blue staining of purified ITGA11 protein (Cat# TP316722). The protein was produced from HEK293T cells transfected with ITGA11 cDNA clone (Cat# [RC216722]) using MegaTran 2.0 (Cat# [TT210002]).