

## Product datasheet for **TP316704**

### **MNK2 (MKNK2) (NM\_199054) Human Recombinant Protein**

#### **Product data:**

<b>Product Type:</b>	Recombinant Proteins
<b>Description:</b>	Recombinant protein of human MAP kinase interacting serine/threonine kinase 2 (MKNK2), transcript variant 2, 20 µg
<b>Species:</b>	Human
<b>Expression Host:</b>	HEK293T
<b>Expression cDNA Clone or AA Sequence:</b>	>RC216704 representing NM_199054 <b>Red</b> =Cloning site <b>Green</b> =Tags(s)
	 MVQKKPAELQGFHRSFKGQNPFELAFSLDQPDHGDSDFGLQCSARPDMPASQPIDIPDAKKRGKKKKRGR ATDSFSGRFEDVYQLQEDVLGEGAHARVQTCINLITSQEYAVKIIKQPGHIRSRVFREVEMLYQCQGHR NVLELIEFFEEEDRFYLVFEKMRGGSILSHIHKRRHFNELEASVVVQDVASALDFLHNKGIAHRDLKPEN ILCEHPNQVSPVKICDFDLGSGIKLNGDCSPISTPELLTPCGSAEYMAPEVVEAFSEEASIIDKRCDLWS LGVILYILLSGYPPFVGRCGSDCGWDRGEACPACQNMLFESIQEGKYEFDPKDWAHISCAAKDLISKLLV RDAKQRLSAAQVLQHPWVQGCAPENTLPTPMVLQRNSCAKDLTSFAAEAIAMNRQLAQHDEDLAEEEEAAG QGQPVLVRATSRCLQLSPPSQSKLAQRRQRASLSSAPVWLVGDHA  <b>TRTRPLEQKLISEEDLAANDILDYKDDDDKV</b>
<b>Tag:</b>	C-Myc/DDK
<b>Predicted MW:</b>	51.7 kDa
<b>Concentration:</b>	>0.05 µg/µL as determined by microplate BCA method
<b>Purity:</b>	> 80% as determined by SDS-PAGE and Coomassie blue staining
<b>Buffer:</b>	25 mM Tris-HCl, 100 mM glycine, pH 7.3, 10% glycerol
<b>Preparation:</b>	Recombinant protein was captured through anti-DDK affinity column followed by conventional chromatography steps.
<b>Note:</b>	For testing in cell culture applications, please filter before use. Note that you may experience some loss of protein during the filtration process.
<b>Storage:</b>	Store at -80°C.
<b>Stability:</b>	Stable for 12 months from the date of receipt of the product under proper storage and handling conditions. Avoid repeated freeze-thaw cycles.



[View online »](#)

RefSeq: [NP\\_951009](#)

Locus ID: 2872

UniProt ID: [Q9HBH9](#), [B3KS07](#)

RefSeq Size: 3795

Cytogenetics: 19p13.3

RefSeq ORF: 1395

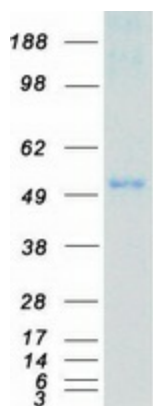
Synonyms: GPRK7; MNK2

**Summary:** This gene encodes a member of the calcium/calmodulin-dependent protein kinases (CAMK) Ser/Thr protein kinase family, which belongs to the protein kinase superfamily. This protein contains conserved DLG (asp-leu-gly) and ENIL (glu-asn-ile-leu) motifs, and an N-terminal polybasic region which binds importin A and the translation factor scaffold protein eukaryotic initiation factor 4G (eIF4G). This protein is one of the downstream kinases activated by mitogen-activated protein (MAP) kinases. It phosphorylates the eukaryotic initiation factor 4E (eIF4E), thus playing important roles in the initiation of mRNA translation, oncogenic transformation and malignant cell proliferation. In addition to eIF4E, this protein also interacts with von Hippel-Lindau tumor suppressor (VHL), ring-box 1 (Rbx1) and Cullin2 (Cul2), which are all components of the CBC(VHL) ubiquitin ligase E3 complex. Multiple alternatively spliced transcript variants have been found, but the full-length nature and biological activity of only two variants are determined. These two variants encode distinct isoforms which differ in activity and regulation, and in subcellular localization. [provided by RefSeq, Aug 2011]

**Protein Families:** Druggable Genome, Protein Kinase

**Protein Pathways:** Insulin signaling pathway, MAPK signaling pathway

### Product images:



Coomassie blue staining of purified MNK2 protein (Cat# TP316704). The protein was produced from HEK293T cells transfected with MNK2 cDNA clone (Cat# [RC216704]) using MegaTran 2.0 (Cat# [TT210002]).