

Product datasheet for **TP316657M**

H2BC9 (NM_003524) Human Recombinant Protein

Product data:

| | |
|---------------------------------------|--|
| Product Type: | Recombinant Proteins |
| Description: | Recombinant protein of human histone cluster 1, H2bh (HIST1H2BH), 100 µg |
| Species: | Human |
| Expression Host: | HEK293T |
| Expression cDNA Clone or AA Sequence: | >RC216657 protein sequence Red =Cloning site Green =Tags(s) |
| | MPDPAKSAPAPKKGSKKAVTKAQKKDGGKRRSRKESYSVYVYKVLKQVHPDTGISSKAMGIMNSFVNDI FERIAGEASRLAHYNKRSTITSREIQTAVRLLLPGELAKHAVSEGTKAVTKYTSSK |
| | TRTRPLEQKLISEEDLAANDILDYKDDDDKV |
| Tag: | C-Myc/DDK |
| Predicted MW: | 13.7 kDa |
| Concentration: | >0.05 µg/µL as determined by microplate BCA method |
| Purity: | > 80% as determined by SDS-PAGE and Coomassie blue staining |
| Buffer: | 25 mM Tris-HCl, 100 mM glycine, pH 7.3, 10% glycerol |
| Preparation: | Recombinant protein was captured through anti-DDK affinity column followed by conventional chromatography steps. |
| Note: | For testing in cell culture applications, please filter before use. Note that you may experience some loss of protein during the filtration process. |
| Storage: | Store at -80°C. |
| Stability: | Stable for 12 months from the date of receipt of the product under proper storage and handling conditions. Avoid repeated freeze-thaw cycles. |
| RefSeq: | NP_003515 |
| Locus ID: | 8345 |
| UniProt ID: | Q93079 |
| RefSeq Size: | 425 |
| Cytogenetics: | 6p22.2 |



[View online »](#)

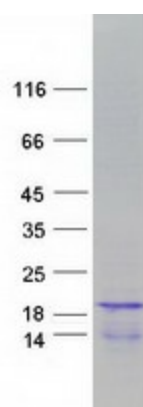
RefSeq ORF: 378

Synonyms: H2B/j; H2BFJ; HIST1H2BH

Summary: Histones are basic nuclear proteins that are responsible for the nucleosome structure of the chromosomal fiber in eukaryotes. Two molecules of each of the four core histones (H2A, H2B, H3, and H4) form an octamer, around which approximately 146 bp of DNA is wrapped in repeating units, called nucleosomes. The linker histone, H1, interacts with linker DNA between nucleosomes and functions in the compaction of chromatin into higher order structures. This gene is intronless and encodes a replication-dependent histone that is a member of the histone H2B family. Transcripts from this gene lack polyA tails but instead contain a palindromic termination element. This gene is found in the large histone gene cluster on chromosome 6. [provided by RefSeq, Aug 2015]

Protein Pathways: Systemic lupus erythematosus

Product images:



Coomassie blue staining of purified HIST1H2BH protein (Cat# [TP316657]). The protein was produced from HEK293T cells transfected with HIST1H2BH cDNA clone (Cat# [RC216657]) using MegaTran 2.0 (Cat# [TT210002]).