

Product datasheet for TP316656M

RUFY4 (NM_198483) Human Recombinant Protein

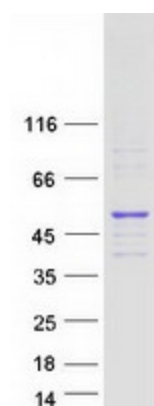
Product data:

Product Type:	Recombinant Proteins
Description:	Recombinant protein of human RUN and FYVE domain containing 4 (RUFY4), 100 µg
Species:	Human
Expression Host:	HEK293T
Expression cDNA Clone or AA Sequence:	>RC216656 protein sequence Red =Cloning site Green =Tags(s) MFSESRCSSSTQTQGRRPRKNKDAPKKIPAAAYGGPENQVQIEDSHTSQAICLDAPSGQQLAGLPRSQQR HLPFFLEKKGESSRKHRYPQSMWEPEGKELQLDQEERAPWIEIFLGNSTPSTQGQKGAMGTQKEVIGM E AEVTGVLLVAEGQRTTEGTHKKEAEWSHVQRLLMPSPRGAVEGAVSGSRQSGSGSSILGEPWVLQGHAT K EDSTVENPQVQTEVTLVARREEQAEVSLQDEIKSLRLGLRKAEEQAQRQEQLLREQEGELQALREQLSRC QEERAELQAQLEQKQQAERRDAMYQEELGGQRDLVQAMKRRVLELIQEKDRLWQRLQHLSSMAPECC VA CSKIFGRFSRRYPCLRCGGLLCHACSMYKRRDRCCPPCAQGREAQVT TR TRPLE QKLISEEDLAANDILDYKDDDDKV
Tag:	C-Myc/DDK
Predicted MW:	64.2 kDa
Concentration:	>0.05 µg/µL as determined by microplate BCA method
Purity:	> 80% as determined by SDS-PAGE and Coomassie blue staining
Buffer:	25 mM Tris-HCl, 100 mM glycine, pH 7.3, 10% glycerol
Preparation:	Recombinant protein was captured through anti-DDK affinity column followed by conventional chromatography steps.
Note:	For testing in cell culture applications, please filter before use. Note that you may experience some loss of protein during the filtration process.
Storage:	Store at -80°C.


[View online »](#)

Stability:	Stable for 12 months from the date of receipt of the product under proper storage and handling conditions. Avoid repeated freeze-thaw cycles.
RefSeq:	<u>NP_940885</u>
Locus ID:	285180
UniProt ID:	<u>Q6ZNE9</u>
RefSeq Size:	2777
Cytogenetics:	2q35
RefSeq ORF:	1194
Synonyms:	ZFYVE31
Summary:	Positively regulates macroautophagy in primary dendritic cells. Increases autophagic flux, probably by stimulating both autophagosome formation and facilitating tethering with lysosomes. Binds to phosphatidylinositol 3-phosphate (PtdIns3P) through its FYVE-type zinc finger.[UniProtKB/Swiss-Prot Function]

Product images:



Coomassie blue staining of purified RUFY4 protein (Cat# [TP316656]). The protein was produced from HEK293T cells transfected with RUFY4 cDNA clone (Cat# [RC216656]) using MegaTran 2.0 (Cat# [TT210002]).