

Product datasheet for TP316640

CD98 (SLC3A2) (NM_002394) Human Recombinant Protein

Product data:

Product Type:	Recombinant Proteins
Description:	Recombinant protein of human solute carrier family 3 (activators of dibasic and neutral amino acid transport), member 2 (SLC3A2), transcript variant 3, 20 µg
Species:	Human
Expression Host:	HEK293T
Expression cDNA Clone or AA Sequence:	>RC216640 protein sequence Red=Cloning site Green=Tags(s)

MELQPPEASIAVVSIPRQLPGSHSEAGVQGLSAGDDSELGSHCVAQTGLELLASGDPLPSASQNAEMIET
GSDCVTQAGLQLLASSDPPALASKNAEVTGTMSQDTEVDMKEVELNELEPEKQPMNAASGAAMSLAGA EK
NGLVKIKVAEDEAEAAAAAKFTGLSKEELLKVGSPGWVTRWALLLLFWLGWLGMLAGAVIIVRAPRC
RELPAQKWWHTGALYRIGDLQAFQGHGAGNLAGLKGRDYLSSLKVKGLVLGPIHKNQKDDVAQTDLLQI
DPNFGSKEDFDSLLQSAKKKSIRVILDTPNYRGENSWFSTQVDTVATKVKDALEFWLQAGVDGFQVRDI
ENLKDASSFLAEWQNITKGFSEDRLLIAGTNSSDLQQLLSLLESNKDLLLLTSSYLSDSGSTGEHTKSLVT
QYLNATGNRWCSWSLSQARLLTSFLPAQLRLRYQLMLFTLPGTPVFSYGD EIGLDAALPGQPMEAPVML
WDESSFPDIPGAVSANMTVKGQSEDPGSLLSFRRLSDQRSKERSLLHGDFHAFSAGPGLFSYIRHWDQN
ERFLVVLNFGDVGLSAGLQASDLPASASLPKADLLLSTQPGREEGSPLELERLKLEPHEGLLLRFPYAA

SGPTRRTRPLEQKLISEEDLAANDILDYKDDDDKV

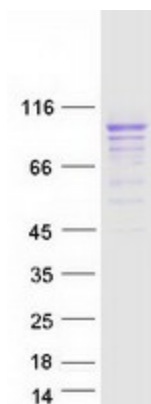
Tag:	C-Myc/DDK
Predicted MW:	67.8 kDa
Concentration:	>0.05 µg/µL as determined by microplate BCA method
Purity:	> 80% as determined by SDS-PAGE and Coomassie blue staining
Buffer:	25 mM Tris-HCl, 100 mM glycine, pH 7.3, 10% glycerol
Preparation:	Recombinant protein was captured through anti-DDK affinity column followed by conventional chromatography steps.
Note:	For testing in cell culture applications, please filter before use. Note that you may experience some loss of protein during the filtration process.
Storage:	Store at -80°C.



[View online »](#)

Stability:	Stable for 12 months from the date of receipt of the product under proper storage and handling conditions. Avoid repeated freeze-thaw cycles.
RefSeq:	NP_002385
Locus ID:	6520
UniProt ID:	P08195
RefSeq Size:	2347
Cytogenetics:	11q12.3
RefSeq ORF:	1890
Synonyms:	4F2; 4F2HC; 4T2HC; CD98; CD98HC; MDU1; NACAE
Summary:	This gene is a member of the solute carrier family and encodes a cell surface, transmembrane protein. The protein exists as the heavy chain of a heterodimer, covalently bound through disulfide bonds to one of several possible light chains. The encoded transporter plays a role in regulation of intracellular calcium levels and transports L-type amino acids. Alternatively spliced transcript variants, encoding different isoforms, have been characterized. [provided by RefSeq, Nov 2010]
Protein Families:	Transmembrane

Product images:



Coomassie blue staining of purified SLC3A2 protein (Cat# TP316640). The protein was produced from HEK293T cells transfected with SLC3A2 cDNA clone (Cat# [RC216640]) using MegaTran 2.0 (Cat# [TT210002]).