

## Product datasheet for **TP316612M**

### **PNMA6A (NM\_032882) Human Recombinant Protein**

#### **Product data:**

<b>Product Type:</b>	Recombinant Proteins
<b>Description:</b>	Recombinant protein of human paraneoplastic antigen like 6A (PNMA6A), 100 µg
<b>Species:</b>	Human
<b>Expression Host:</b>	HEK293T
<b>Expression cDNA Clone or AA Sequence:</b>	>RC216612 protein sequence <b>Red</b> =Cloning site <b>Green</b> =Tags(s)

MAVTMLQDWCRWMGVNARRGLLILGIPEDCDDAEFQESLEAALRPMGHFTVLGKAFREEDNATAALVELD  
REVNYALVPREIPGTGGPWNVVFVPRCSGEEFLGLGRVHFHPEQEGQMVESVAGALGVGLRRVCWLRSIG  
QAVQPWVEAVRCQSLGVFSGRDQPAPGEESFEVWLDHTTEMLHVVQGVSERERRRRLLEGLRGTAQLVH  
ALLAENPARTAQDCLAALAQVFGDNESQATIRVKCLTAQQQSGERLSAFVLRLEVLLQKAMEKEALARAS  
ADRVRRLRQMLTRAHLTEPLDEALRKLRMAGRSPSFLEMLGLVRESEAWESLARSVRAQTQEGAGARAGA  
QAVARASTKVEAVPGGPGREPEGLLQAGGQEAELLQEGLKPVLEECDN

**TRTRPLEQKLISEEDLAANDILDYKDDDDKV**

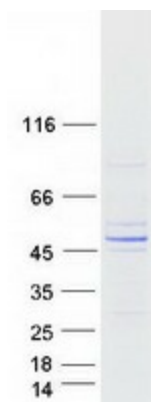
<b>Tag:</b>	C-Myc/DDK
<b>Predicted MW:</b>	43.8 kDa
<b>Concentration:</b>	>0.05 µg/µL as determined by microplate BCA method
<b>Purity:</b>	> 80% as determined by SDS-PAGE and Coomassie blue staining
<b>Buffer:</b>	25 mM Tris-HCl, 100 mM glycine, pH 7.3, 10% glycerol
<b>Preparation:</b>	Recombinant protein was captured through anti-DDK affinity column followed by conventional chromatography steps.
<b>Note:</b>	For testing in cell culture applications, please filter before use. Note that you may experience some loss of protein during the filtration process.
<b>Storage:</b>	Store at -80°C.
<b>Stability:</b>	Stable for 12 months from the date of receipt of the product under proper storage and handling conditions. Avoid repeated freeze-thaw cycles.
<b>RefSeq:</b>	<u><a href="#">NP_116271</a></u>
<b>Locus ID:</b>	84968



[View online »](#)

UniProt ID: [P0CW24](#)  
RefSeq Size: 2278  
Cytogenetics: Xq28  
RefSeq ORF: 1197  
Synonyms: MA6; PNMA6; PNMA6C

### Product images:



Coomassie blue staining of purified PNMA6A protein (Cat# [TP316612]). The protein was produced from HEK293T cells transfected with PNMA6A cDNA clone (Cat# [RC216612]) using MegaTran 2.0 (Cat# [TT210002]).