

Product datasheet for **TP316603M**

SLAMF8 (NM_020125) Human Recombinant Protein

Product data:

Product Type: Recombinant Proteins

Description: Recombinant protein of human SLAM family member 8 (SLAMF8), 100 µg

Species: Human

Expression Host: HEK293T

**Expression cDNA Clone
or AA Sequence:** >RC216603 protein sequence
Red=Cloning site **Green**=Tags(s)

MVMRPLWSLLLWEALLPITVTGAQVLSKVGGSVLLVAARPPGFQVREAIWRSLWPSEELLATFFRGSLET
LYHSRFLGRAQLHSNLSLELGPLES GDSGNFVLMVDTRGQPWTQTLQLKVYDAVPRPVVQVFI AVERDA
QPSKTCQVFLSCWAPNISEITYSWRRETTMDFGMEPHSLFTDGGVLSISLPGD RDVAYSCIVSNPVSWD
LATVTPWDSCHHEAAPGKASYKDVLLVVPV SLLLMLVTLFSAWHWCPCSGK KKKKDVHADRVGPETENPL
VQDLP

TRTRPLEQKLISEEDLAANDILDYKDDDDKV

Tag: C-Myc/DDK

Predicted MW: 31.5 kDa

Concentration: >0.05 µg/µL as determined by microplate BCA method

Purity: > 80% as determined by SDS-PAGE and Coomassie blue staining

Buffer: 25 mM Tris-HCl, 100 mM glycine, pH 7.3, 10% glycerol

Preparation: Recombinant protein was captured through anti-DDK affinity column followed by conventional chromatography steps.

Note: For testing in cell culture applications, please filter before use. Note that you may experience some loss of protein during the filtration process.

Storage: Store at -80°C.

Stability: Stable for 12 months from the date of receipt of the product under proper storage and handling conditions. Avoid repeated freeze-thaw cycles.

RefSeq: [NP_064510](#)

Locus ID: 56833



[View online »](#)

UniProt ID: [Q9POV8](#)

RefSeq Size: 3316

Cytogenetics: 1q23.2

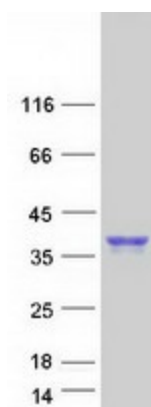
RefSeq ORF: 855

Synonyms: BLAME; CD353; SBBI42

Summary: This gene encodes a member of the CD2 family of cell surface proteins involved in lymphocyte activation. These proteins are characterized by Ig domains. This protein is expressed in lymphoid tissues, and studies of a similar protein in mouse suggest that it may function during B cell lineage commitment. The gene is found in a region of chromosome 1 containing many CD2 genes. [provided by RefSeq, Jul 2008]

Protein Families: Druggable Genome, Transmembrane

Product images:



Coomassie blue staining of purified SLAMF8 protein (Cat# [TP316603]). The protein was produced from HEK293T cells transfected with SLAMF8 cDNA clone (Cat# [RC216603]) using MegaTran 2.0 (Cat# [TT210002]).