

Product datasheet for **TP316603**

SLAMF8 (NM_020125) Human Recombinant Protein

Product data:

Product Type:	Recombinant Proteins
Description:	Recombinant protein of human SLAM family member 8 (SLAMF8), 20 µg
Species:	Human
Expression Host:	HEK293T
Expression cDNA Clone or AA Sequence:	>RC216603 protein sequence Red =Cloning site Green =Tags(s)
	 MVMRPLWSLLLWEALLPITVTGAQVLSKVGGSVLLVAARPPGFQVREAIWRSLWPSEELLATFFRGSLET LYHSRFLGRAQLHSNLSLELGPLES GDSGNFVLMVDTRGQPWTQTLQLKVYDAVPRPVVQVFI AVERDA QPSKTCQVFLSCWAPNISEITYSWRRETTMDFGMEPHSLFTDGGVLSISLPGD RDVAYSCIVSNPVSWD LATVTPWDSCHHEAAPGKASYKDVLLVVPV SLLLMLVTLFSAWHWCPCSGK KKKKDVHADRVGPETENPL VQDLP TRTRPLEQKLISEEDLAANDILDYKDDDDKV
Tag:	C-Myc/DDK
Predicted MW:	31.5 kDa
Concentration:	>0.05 µg/µL as determined by microplate BCA method
Purity:	> 80% as determined by SDS-PAGE and Coomassie blue staining
Buffer:	25 mM Tris-HCl, 100 mM glycine, pH 7.3, 10% glycerol
Preparation:	Recombinant protein was captured through anti-DDK affinity column followed by conventional chromatography steps.
Note:	For testing in cell culture applications, please filter before use. Note that you may experience some loss of protein during the filtration process.
Storage:	Store at -80°C.
Stability:	Stable for 12 months from the date of receipt of the product under proper storage and handling conditions. Avoid repeated freeze-thaw cycles.
RefSeq:	<u>NP_064510</u>
Locus ID:	56833



[View online »](#)

UniProt ID: [Q9POV8](#)

RefSeq Size: 3316

Cytogenetics: 1q23.2

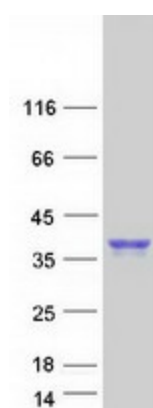
RefSeq ORF: 855

Synonyms: BLAME; CD353; SBBI42

Summary: This gene encodes a member of the CD2 family of cell surface proteins involved in lymphocyte activation. These proteins are characterized by Ig domains. This protein is expressed in lymphoid tissues, and studies of a similar protein in mouse suggest that it may function during B cell lineage commitment. The gene is found in a region of chromosome 1 containing many CD2 genes. [provided by RefSeq, Jul 2008]

Protein Families: Druggable Genome, Transmembrane

Product images:



Coomassie blue staining of purified SLAMF8 protein (Cat# TP316603). The protein was produced from HEK293T cells transfected with SLAMF8 cDNA clone (Cat# [RC216603]) using MegaTran 2.0 (Cat# [TT210002]).