

## Product datasheet for **TP316602L**

### GRK4 (NM\_182982) Human Recombinant Protein

#### Product data:

Product Type:	Recombinant Proteins
Description:	Recombinant protein of human G protein-coupled receptor kinase 4 (GRK4), transcript variant 1, 1 mg
Species:	Human
Expression Host:	HEK293T
Expression cDNA Clone or AA Sequence:	>RC216602 protein sequence <b>Red</b> =Cloning site <b>Green</b> =Tags(s)

MELENIVANSLLLKARQGGYGGKSGRSKKWKEILTLPVVSQCSELRHSIEKDYSSSLCDKQPIGRRLFRQF  
CDTKPTLKRHIEFLDAVAEYEVADDEDSDCGLSILDRFFNDKLAAPLPEIPPDVVTECRLGLKEENPSK  
KAFEECTRAVHNYLRGEPFEEYQESSYFSQFLQWKWLERQPVTKNTFRHYRVLGKGGFGEVCACQVRATG  
KMYACKKLQKKRIKKRKGAMALNEKRILEKVQSRFVSLAYAYETKDALCLVLTIMNGGDLKFHIYNLG  
NPGFDEQRAVFYAAELCCGLEDLQRERIVYRDLKPENILLDDRGHIRISDLGLATEIPEGQVRGRVGTV  
GYMAPEVNNKEYTFSPDWWGLGCLYEMIQGHSPFKYKEKVKWEEVDQRIKNDTEEYSEKFSEDAISI  
CRMLLTKNPSKRLGCRGEGAAGVKQHPVFKDINFRRLEANMLEPPFCPPHAYVCKDVLIDIEQFSAVKGI  
YLDTADEDFYARFATGCVSIPWQNEMIESGCFKDINKSESEALPLDLKNIHTPVSRRPNRGGFFYRLFR  
GGCLTMVPSEKEVEPKQC

**TRTRPLEQKLISEEDLAANDILDYKDDDDKV**

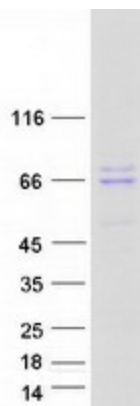
Tag:	C-Myc/DDK
Predicted MW:	66.4 kDa
Concentration:	>0.05 µg/µL as determined by microplate BCA method
Purity:	> 80% as determined by SDS-PAGE and Coomassie blue staining
Buffer:	25 mM Tris-HCl, 100 mM glycine, pH 7.3, 10% glycerol
Preparation:	Recombinant protein was captured through anti-DDK affinity column followed by conventional chromatography steps.
Note:	For testing in cell culture applications, please filter before use. Note that you may experience some loss of protein during the filtration process.
Storage:	Store at -80°C.



[View online »](#)

<b>Stability:</b>	Stable for 12 months from the date of receipt of the product under proper storage and handling conditions. Avoid repeated freeze-thaw cycles.
<b>RefSeq:</b>	<a href="#">NP_892027</a>
<b>Locus ID:</b>	2868
<b>UniProt ID:</b>	<a href="#">P32298</a>
<b>RefSeq Size:</b>	2321
<b>Cytogenetics:</b>	4p16.3
<b>RefSeq ORF:</b>	1734
<b>Synonyms:</b>	GPRK2L; GPRK4; GRK4a; IT11
<b>Summary:</b>	This gene encodes a member of the guanine nucleotide-binding protein (G protein)-coupled receptor kinase subfamily of the Ser/Thr protein kinase family. The protein phosphorylates the activated forms of G protein-coupled receptors thus initiating its deactivation. This gene has been linked to both genetic and acquired hypertension. Several transcript variants encoding different isoforms have been found for this gene. [provided by RefSeq, Nov 2013]
<b>Protein Families:</b>	Druggable Genome, Protein Kinase
<b>Protein Pathways:</b>	Chemokine signaling pathway, Endocytosis

### Product images:



Coomassie blue staining of purified GRK4 protein (Cat# [TP316602]). The protein was produced from HEK293T cells transfected with GRK4 cDNA clone (Cat# [RC216602]) using MegaTran 2.0 (Cat# [TT210002]).