

Product datasheet for TP316560M

CADPS2 (NM_017954) Human Recombinant Protein

Product data:

Product Type: Recombinant Proteins
Description: Recombinant protein of human Ca⁺⁺-dependent secretion activator 2 (CADPS2), transcript variant 1, 100 µg
Species: Human
Expression Host: HEK293T
Expression cDNA Clone or AA Sequence: >RC216560 representing NM_017954
Red=Cloning site Green=Tags(s)

MLDPSSEEEESDEGLEEESRDVLAAGSSQRAPPAPTREGRRDAPGRAGGGGAARSVSPSPSVLSEGRDE
PQRQLDDEQERRIRLQLYVFWVRCIAYPFNAKQPTDMARRQKLNKQQLQLLKERFQAFNLGETQIVADE
AFCNAVRSYYEVFLKSDRVARMVQSGGCSANDFREVFKNIEKRVRSLEIPDGLSKETVLSWIAKYDAI
YRGEEDLCKQPNRMAVSSELILSKEQLYEMFQQILGIKLEHQLLYNACQLDNADEQAAQIRRELDGR
LQLADKMAKERKFPKFIKDMENMYIEELRSSVLLMANLESPLVSKGGPEFKLQKLKRSQNSAFLDIGD
ENEIQLSKSDVLSFTLEIVIMEVQGLKSVAPNRIVYCTMEVEGEKLQTDQAEASRPQWGTQGDFTTTHP
RPVVKVLFTESTGVLAEDEKELGRVILYPTSNSKSAELHRMVPKNSQSDSLKIKLAVRMDKPAHMKH
SGYLYALGQKVWKRWKKRYFVLVQVSQYTFAMCSYREKKSEPQELMQLEGYTVDYTDPHPLGQGGCMFFN
AVKEGDTVIFASDDEQDRILWVQAMYRATGQSYKVPVPAIQTKLNPKGGLHADAQLSGKDADRQKHGM
DEFISANPCKLDHAFRLFRILQRQTLDHRLNDSYSLGWFSQGVFLDEYCARYGVRGCHRHLCYLAELM
EHSENGAVIDPTLLHYSFAFCASHVHGNRPDGIGTVSVEEKERFEEIKERLSSLLENQISHFRYCFPFGR
PEGALKATLSLLERVLMKDIATPIPAEEVKKVVRKCLEKAALINYTRLTEYAKIEETMNQASPARKLEEI
LHLAELCIEVLQQNEEHHAEGREAFWWPDLLAEHAEKFWALFTVDMDTALEAQPQDSWDSFPLFQLLNN
FLRNDTLLCNGKFHKHLQEIVPLVRYVDLMESSIAQSIHRGFEQETWQPVKNIANSPLNVALPKVPSL
PLNLPQIPNISTASWMPPLYESTNGSATSEDLFWKLDALQMFVFDLHWPEQEFHAHLEQLKLMASDMLE
ACVKRTRTAFELKLQKASKTTDLRIPASVCTMFNVLDVAKKQSTKLCALDGGQEQQYHKKIDDLIDNSVK
EIIISLLVSKFVSVLEGLVLSKLSRYDEGTFSSILSFTVKAAYVDVPPKGMIDLADTYIMFVRQNQDILR
EKVNEEMYIEKLFQWYSSSMKVICVWLTDRDLQLHIYQLKTLIKIVKKTYPFRQLQGVLEGLTNSKTY
DTVHRRLTVEEATASVSEGGGLQGITMKDSDEEEEG

TRTRPLEQKLISEEDLAANDILDYKDDDDKV

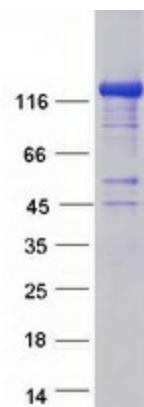
Tag: C-Myc/DDK
Predicted MW: 147.6 kDa



[View online »](#)

Concentration:	>0.05 µg/µL as determined by microplate BCA method
Purity:	> 80% as determined by SDS-PAGE and Coomassie blue staining
Buffer:	25 mM Tris-HCl, 100 mM glycine, pH 7.3, 10% glycerol
Preparation:	Recombinant protein was captured through anti-DDK affinity column followed by conventional chromatography steps.
Note:	For testing in cell culture applications, please filter before use. Note that you may experience some loss of protein during the filtration process.
Storage:	Store at -80°C.
Stability:	Stable for 12 months from the date of receipt of the product under proper storage and handling conditions. Avoid repeated freeze-thaw cycles.
RefSeq:	NP_060424
Locus ID:	93664
UniProt ID:	Q86UW7
RefSeq Size:	5815
Cytogenetics:	7q31.32
RefSeq ORF:	3888
Synonyms:	CAPS2
Summary:	This gene encodes a member of the calcium-dependent activator of secretion (CAPS) protein family, which are calcium binding proteins that regulate the exocytosis of synaptic and dense-core vesicles in neurons and neuroendocrine cells. Mutations in this gene may contribute to autism susceptibility. Multiple transcript variants encoding different isoforms have been found for this gene. [provided by RefSeq, Nov 2009]

Product images:



Coomassie blue staining of purified CADPS2 protein (Cat# [TP316560]). The protein was produced from HEK293T cells transfected with CADPS2 cDNA clone (Cat# [RC216560]) using MegaTran 2.0 (Cat# [TT210002]).