

## Product datasheet for TP316560

### CADPS2 (NM\_017954) Human Recombinant Protein

#### Product data:

**Product Type:** Recombinant Proteins  
**Description:** Recombinant protein of human Ca<sup>++</sup>-dependent secretion activator 2 (CADPS2), transcript variant 1, 20 µg  
**Species:** Human  
**Expression Host:** HEK293T  
**Expression cDNA Clone or AA Sequence:** >RC216560 representing NM\_017954  
Red=Cloning site Green=Tags(s)

MLDPSSEEEESDEGLEEESRDVLAAGSSQRAPPAPTREGRRDAPGRAGGGGAARSVSPSPSVLSEGRDE  
PQRQLDDEQERRIRLQLYVFWVRCIAYPFNAKQPTDMARRQQKLNKQQLQLLKERFQAFNLGETQIVADE  
AFCNAVRSYYEVFLKSDRVARMVQSGGCSANDFREVFKNIEKRVRSLEIPDGLSKETVLSWIAKYDAI  
YRGEEDLCKQPNRMAVSSELILSKEQLYEMFQQILGIKLEHQLLYNACQLDNADEQAAQIRRELDGR  
LQLADKMAKERKFPKFIKDMENMYIEELRSSVLLMANLESPLVSKGGPEFKLQKLKRSQNSAFLDIGD  
ENEIQLSKSDVLSFTLEIVIMEVQGLKSVAPNRIVYCTMEVEGEKLQTDQAEASRPQWGTQGDFTTTHP  
RPVVKVLFTESTGVLAEDEKELGRVILYPTSNSKSAELHRMVPKNSQSDSLKIKLAVRMDKPAHMKH  
SGYLYALGQKVWKRWKKRYFVLVQVSQYTFAMCSYREKKSEPQELMQLEGYTVDYDTPHPGLQGGMFFN  
AVKEGDTVIFASDDEQDRILWVQAMYRATGQSYKVPVPAIQTKLNPKGGLHADAQLSGKDADRQKHGM  
DEFISANPCKLDHAFRLFRILQRQTLDHRLNDSYSLGWFSQGVFLDEYCARYGVRGCHRHLCYLAELM  
EHSENGAVIDPTLLHYSFAFCASHVHGNRPDGIGTVSVEEKERFEEIKERLSSLLENQISHFRYCFPFGR  
PEGALKATLSLLERVLMKDIATPIPAEEVKKVVRKCLEKAALINYTRLTEYAKIEETMNQASPARKLEEI  
LHLAELCIEVLQQNEEHHAEGREAFWWPDLLAEHAEKFWALFTVDMDTALEAQPQDSWDSFPLFQLLNN  
FLRNDTLLCNGKFHKLHLEIFVPLVRYVDLMESSIAQSIHRGFEQETWQPVKNIANSPLNVALPKVPSL  
PLNLPQIPNISTASWMPPLYESTNGSATSEDLFWKLDALQMFVFDLHWPEQEFHAHLEQLKLMASDMLE  
ACVKRTRTAFELKLQKASKTTDLRIPASVCTMFNVLDVAKKQSTKLCALDGGQEQQYHKKIDDLIDNSVK  
EIIISLLVSKFVSVLEGLVSKLSRYDEGTFSSILSFTVKAASKYVDVPPKGMIDLADTYIMFVRQNQDILR  
EKVNEEMYIEKLFQWYSSSMKVICVWLTDRDLQLHIYQLKTLIKIVKKTYPDFRLQGVLEGLTNSKTY  
DTVHRRLTVEEATASVSEGGGLQGITMKDSDEEEEG

TRTRPLEQKLISEEDLAANDILDYKDDDDKV

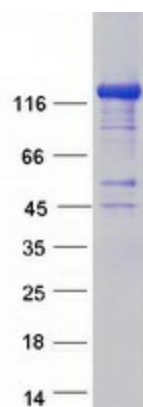
**Tag:** C-Myc/DDK  
**Predicted MW:** 147.6 kDa



[View online »](#)

<b>Concentration:</b>	>0.05 µg/µL as determined by microplate BCA method
<b>Purity:</b>	> 80% as determined by SDS-PAGE and Coomassie blue staining
<b>Buffer:</b>	25 mM Tris-HCl, 100 mM glycine, pH 7.3, 10% glycerol
<b>Preparation:</b>	Recombinant protein was captured through anti-DDK affinity column followed by conventional chromatography steps.
<b>Note:</b>	For testing in cell culture applications, please filter before use. Note that you may experience some loss of protein during the filtration process.
<b>Storage:</b>	Store at -80°C.
<b>Stability:</b>	Stable for 12 months from the date of receipt of the product under proper storage and handling conditions. Avoid repeated freeze-thaw cycles.
<b>RefSeq:</b>	<a href="#">NP_060424</a>
<b>Locus ID:</b>	93664
<b>UniProt ID:</b>	<a href="#">Q86UW7</a>
<b>RefSeq Size:</b>	5815
<b>Cytogenetics:</b>	7q31.32
<b>RefSeq ORF:</b>	3888
<b>Synonyms:</b>	CAPS2
<b>Summary:</b>	This gene encodes a member of the calcium-dependent activator of secretion (CAPS) protein family, which are calcium binding proteins that regulate the exocytosis of synaptic and dense-core vesicles in neurons and neuroendocrine cells. Mutations in this gene may contribute to autism susceptibility. Multiple transcript variants encoding different isoforms have been found for this gene. [provided by RefSeq, Nov 2009]

### Product images:



Coomassie blue staining of purified CADPS2 protein (Cat# TP316560). The protein was produced from HEK293T cells transfected with CADPS2 cDNA clone (Cat# [RC216560]) using MegaTran 2.0 (Cat# [TT210002]).