

Product datasheet for TP316553M

FAM29A (HAUS6) (NM_017645) Human Recombinant Protein

Product data:

| | |
|---------------------------------------|--|
| Product Type: | Recombinant Proteins |
| Description: | Recombinant protein of human family with sequence similarity 29, member A (FAM29A), 100 µg |
| Species: | Human |
| Expression Host: | HEK293T |
| Expression cDNA Clone or AA Sequence: | >RC216553 protein sequence Red=Cloning site Green=Tags(s) |

MSSASVTAFEKEHLWMYLQALGFEPGPATACGKIVSHTHLGVMFDFKLNRFDAFHIIISYFLFQVLDQSLT
KEVFKFCWPPFDQKSDTEFRKHCCIEWIKRISGECGSSFPQVVGSLFLSPGGPKFIHLMYHFARFVAMKYI
KSNKNSHHFVETFNIPQDLHKIARCHFARSRFLQILQRQDCVTQKYQENAQLSVKQVRNLRSECIG
LENQIKKMEPYDDHSNMEEKIQKVRSLWASVNETLMFLEKEREVSSVLSLVNQYALDGTNVAINIPRLL
LDKIEKQMFQLHIGNVYEAGKLNLLTVIQLLNEVLKVMKYERCQADQARLTVDLHYLEKETKFQKERLSD
LKHMRRIKDDLTTIRHSVVEKQGEWHKKWKEFLGLSPFLIKGWTPSDLLPPMSPLSFDPAEEVYAK
SILCQYPASLPDAHKQHNQENGCGRGSDTLGALHDLANSPASFLSQSVSSDRNSVTVLEKDTKMGTPKE
KNEAISKKIPEFEVENSPLSDVAKNTESSAFGGSLPAKKSDFQKEQDHLVEEVARAVLSDSPQLSEGKE
IKLEELIDSLGPNPFLTRNQIPRTPENLITEIRSSWRKAIEMEENRTKEPIQMDVEHREVLPESLPVLHN
QREFSMADFLLETTVSDFGQSHLTEEKVISDCECVQKHVLTSHIDEPTQNSDLLNKKVICKQDLECL
AFTKLSESRMETFSPAVGNRIDVMGGSEEFMKILDHLEVSCNKPSTNKTMLWNSFQISIGISSKSFKD
NDFGILHETLPEEVGHLSFNSSSSSEANFKLEPNSPMHGGTLLLEDVVGGRQTTPESEFNLQALRSRYEAL
KKSLSKKREESYLSNSQTPERHKPELSPTPQNVQTDLNLFLDTCDLHTEHIKPSLRTSIGERKRSLSP
IKFSPVEQRLRTTIACSLGELPNLKEEDILNKSLDAKEPPSDLTR

TRTRPLEQKLISEEDLAANDILDYKDDDDKV

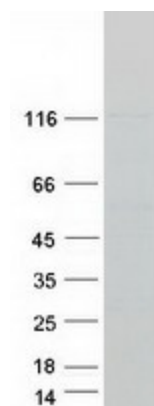
| | |
|----------------|---|
| Tag: | C-Myc/DDK |
| Predicted MW: | 108.4 kDa |
| Concentration: | >0.05 µg/µL as determined by microplate BCA method |
| Purity: | > 80% as determined by SDS-PAGE and Coomassie blue staining |
| Buffer: | 25 mM Tris-HCl, 100 mM glycine, pH 7.3, 10% glycerol |



[View online »](#)

| | |
|----------------------|---|
| Preparation: | Recombinant protein was captured through anti-DDK affinity column followed by conventional chromatography steps. |
| Note: | For testing in cell culture applications, please filter before use. Note that you may experience some loss of protein during the filtration process. |
| Storage: | Store at -80°C. |
| Stability: | Stable for 12 months from the date of receipt of the product under proper storage and handling conditions. Avoid repeated freeze-thaw cycles. |
| RefSeq: | NP_060115 |
| Locus ID: | 54801 |
| UniProt ID: | Q7Z4H7 |
| RefSeq Size: | 6365 |
| Cytogenetics: | 9p22.1 |
| RefSeq ORF: | 2865 |
| Synonyms: | Dgt6; FAM29A |
| Summary: | The protein encoded by this gene is a subunit of the augmin complex. The augmin complex plays a role in microtubule attachment to the kinetochore and central spindle formation. This protein may have a role in efficient chromosome congression and segregation by promoting microtubule-dependent microtubule amplification. Pseudogenes of this gene are located on chromosomes 7 and 20. Alternative splicing results in multiple transcript variants that encode different protein isoforms. [provided by RefSeq, Aug 2012] |

Product images:



Coomassie blue staining of purified HAUS6 protein (Cat# [TP316553]). The protein was produced from HEK293T cells transfected with HAUS6 cDNA clone (Cat# [RC216553]) using MegaTran 2.0 (Cat# [TT210002]).