

## Product datasheet for TP316553

### FAM29A (HAUS6) (NM\_017645) Human Recombinant Protein

#### Product data:

Product Type:	Recombinant Proteins
Description:	Recombinant protein of human family with sequence similarity 29, member A (FAM29A), 20 µg
Species:	Human
Expression Host:	HEK293T
Expression cDNA Clone or AA Sequence:	>RC216553 protein sequence Red=Cloning site Green=Tags(s)

MSSASVTAFEKEHLWMYLQALGFEPGPATACGKIVSHTHLGVMFDFKLNRFDAFHIIISYFLFQVLDQSLT  
KEVFKFCWPPFDQKSDTEFRKHCCWIKRISGECGSSFPQVVGSLFLSPGGPKFIHLMYHFARFVAMKYI  
KSNKNSHHFVETFNIPQDLHKIARCHFARSFRLQILQRQDCVTQKYQENAQLSVKQVRNLRSECIG  
LENQIKKMEPYDDHSNMEEKIQKVRSLWASVNETLMFLEKEREVSSVLSLVNQYALDGTNVAINIPRL  
LDKIEKQMFQLHIGNVYEAGKLNLLTVIQLLNEVLKVMKYERCQADQARLTVDLHYLEKETKFKERLSD  
LKHMRYRIKDDLTTIRHSVVEKQGEWHKKWKEFLGLSPFLIKGWTPSVDLLPPMSPLSFDPAEEVYAK  
SILCQYPASLPDAHKQHNQENGCGRGSDTLGALHDLANSFASFLSQSVSSDRNSVTVLEKDTKMGTPKE  
KNEAISKKIPEFEVENSPLSDVAKNTESSAFGGSLPAKKSDFQKEQDHLVEEVARAVLSDSPQLSEGKE  
IKLEELIDSLGPNPFLTRNQIPRTPENLITEIRSSWRKAIEMEENRTKEPIQMDVEHREVLPESLPVLHN  
QREFSMADFLLETTVSDFGQSHLTEEKVISDCECVPQKHVLTSHIDEPPQTQNSDLLNKKVICKQDLECL  
AFTKLSETSRMETFSPAVGNRIDVMGGSEEFMKILDHLEVSCNKPSTNKTMLWNSFQISIGISSKSFKD  
NDFGILHETLPEEVGHLSFNSSSSSEANFKLEPNSPMHGGTLLEDVVGGRQTTPESDFNLQALRSRYEAL  
KKSLSKKREESYLSNSQTPERHKPELSPTPQNVQTDLNLFLDTCDLHTEHIKPSLRTSIGERKRSLSP  
IKFSPVEQRLRTTIACSLGELPNLKEEDILNKSLDAKEPPSDLTR

TRTRPLEQKLISEEDLAANDILDYKDDDDKV

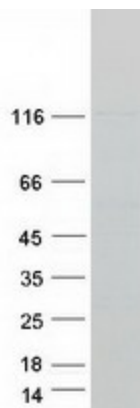
Tag:	C-Myc/DDK
Predicted MW:	108.4 kDa
Concentration:	>0.05 µg/µL as determined by microplate BCA method
Purity:	> 80% as determined by SDS-PAGE and Coomassie blue staining
Buffer:	25 mM Tris-HCl, 100 mM glycine, pH 7.3, 10% glycerol
Preparation:	Recombinant protein was captured through anti-DDK affinity column followed by conventional chromatography steps.



[View online »](#)

<b>Note:</b>	For testing in cell culture applications, please filter before use. Note that you may experience some loss of protein during the filtration process.
<b>Storage:</b>	Store at -80°C.
<b>Stability:</b>	Stable for 12 months from the date of receipt of the product under proper storage and handling conditions. Avoid repeated freeze-thaw cycles.
<b>RefSeq:</b>	<a href="#">NP_060115</a>
<b>Locus ID:</b>	54801
<b>UniProt ID:</b>	<a href="#">Q7Z4H7</a>
<b>RefSeq Size:</b>	6365
<b>Cytogenetics:</b>	9p22.1
<b>RefSeq ORF:</b>	2865
<b>Synonyms:</b>	Dgt6; FAM29A
<b>Summary:</b>	The protein encoded by this gene is a subunit of the augmin complex. The augmin complex plays a role in microtubule attachment to the kinetochore and central spindle formation. This protein may have a role in efficient chromosome congression and segregation by promoting microtubule-dependent microtubule amplification. Pseudogenes of this gene are located on chromosomes 7 and 20. Alternative splicing results in multiple transcript variants that encode different protein isoforms. [provided by RefSeq, Aug 2012]

### Product images:



Coomassie blue staining of purified HAUS6 protein (Cat# TP316553). The protein was produced from HEK293T cells transfected with HAUS6 cDNA clone (Cat# [RC216553]) using MegaTran 2.0 (Cat# [TT210002]).