

## Product datasheet for TP316529

### PIST (GOPC) (NM\_020399) Human Recombinant Protein

#### Product data:

Product Type:	Recombinant Proteins
Description:	Recombinant protein of human golgi associated PDZ and coiled-coil motif containing (GOPC), transcript variant 1, 20 µg
Species:	Human
Expression Host:	HEK293T
Expression cDNA	>RC216529 representing NM_020399
Clone or AA Sequence:	Red=Cloning site Green=Tags(s)
	<p>MSAGGPCPAAAGGGPGGASCSVGPAGGVSMFRWLEVLEKEFDKAFVDVDDLLLGEIDPDQADITYEGRQKM TSLSSCFAQLCHKAQSVSQINHKLEAQLVDLKSELTETQAEKVVLEKEVHDQLQLHSIQLQLHAKTGQS ADSGTIKAKLSGSPVEELERELEANKKEKMKEAQLEAEVKLLRKENEALRRHIAVLQAEVYGARLAAKYL DKELAGRVQIQILLGRDMKGP AHDKLWNQLEAEIHLHRHKTIVIRACRGRNDLKRPMQAPPGHDDQSLKKS QGVGPIRKVLLKEDHEGLGISITGGKEHGVPILOSEIHPGQPADRCGGLHVGDAILAVNGVNL RDTKHK EAVTILSQRGEIEFEVYVAPEVDSDDENVEYEDES GHRYRLYLDELEGGGNPGASCKDTSGEIKVLQG FNKKA VTDTHENGDLGTASETPLDDGASKLDDDLHTLYHKKSY</p> <p>TRTRPLEQKLISEEDLAANDILDYKDDDDKV</p>
Tag:	C-Myc/DDK
Predicted MW:	50.3 kDa
Concentration:	>0.05 µg/µL as determined by microplate BCA method
Purity:	> 80% as determined by SDS-PAGE and Coomassie blue staining
Buffer:	25 mM Tris-HCl, 100 mM glycine, pH 7.3, 10% glycerol
Preparation:	Recombinant protein was captured through anti-DDK affinity column followed by conventional chromatography steps.
Note:	For testing in cell culture applications, please filter before use. Note that you may experience some loss of protein during the filtration process.
Storage:	Store at -80°C.
Stability:	Stable for 12 months from the date of receipt of the product under proper storage and handling conditions. Avoid repeated freeze-thaw cycles.



[View online »](#)

RefSeq: [NP\\_065132](#)

Locus ID: 57120

UniProt ID: [Q9HD26](#)

RefSeq Size: 4604

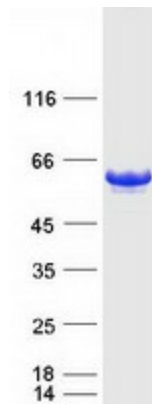
Cytogenetics: 6q22.1

RefSeq ORF: 1386

Synonyms: CAL; dj94G16.2; FIG; GOPC1; PIST

**Summary:** This gene encodes a Golgi protein with a PDZ domain. The PDZ domain is globular and proteins which contain them bind other proteins through short motifs near the C-termini. Mice which are deficient in the orthologous protein have globozoospermia and are infertile. Multiple transcript variants encoding different isoforms have been found for this gene. [provided by RefSeq, Dec 2011]

### Product images:



Coomassie blue staining of purified GOPC protein (Cat# TP316529). The protein was produced from HEK293T cells transfected with GOPC cDNA clone (Cat# [RC216529]) using MegaTran 2.0 (Cat# [TT210002]).