

Product datasheet for **TP316527L**

GALK2 (NM_001001556) Human Recombinant Protein

Product data:

Product Type:	Recombinant Proteins
Description:	Recombinant protein of human galactokinase 2 (GALK2), transcript variant 2, 1 mg
Species:	Human
Expression Host:	HEK293T
Expression cDNA	>RC216527 representing NM_001001556
Clone or AA Sequence:	Red=Cloning site Green=Tags(s)

MPVLYDRLLKLEKEMFNSKFGSIPKFFVVRAPGRVNIIGEHIIDYCGYSVLPMAVEQDVLIAVEPVKTYALQL
ANTNPLYPDFSTSANNIQIDKTKPLWHNYFLCGLKGIQEHFGLSNLTGMNCLVDGNIPPSSGLSSSSALV
CCAGLVTLTVLGRNLSKVELAEICAKSERYIGTEGGMDQSSISFLAEEGTAKLIEFSPLRATDVKLPSGA
VFVIANSCVEMNKAATSHFNIRVMECLAAKLLAKYKSLQWDKVLRLEEVAQKLGISLEEMLLVTEDALH
PEPYNPEEICRCLGISLEELRTQILSPNTQDVLIFKLYQRAKHVYSEARVLQFKKICEEAPENMVQLLG
ELMNQSHMSCRDMYECSCPELDQLVDICRKFQAQGSRLTGAGWGGCTVSMVPADKLPFLANVHKAYYQR
SDGSLAPEKQSLFATKPGGGALVLEA

TRTRPLEQKLISEEDLAANDILDYKDDDDKV

Tag:	C-Myc/DDK
Predicted MW:	49.1 kDa
Concentration:	>0.05 µg/µL as determined by microplate BCA method
Purity:	> 80% as determined by SDS-PAGE and Coomassie blue staining
Buffer:	25 mM Tris-HCl, 100 mM glycine, pH 7.3, 10% glycerol
Preparation:	Recombinant protein was captured through anti-DDK affinity column followed by conventional chromatography steps.
Note:	For testing in cell culture applications, please filter before use. Note that you may experience some loss of protein during the filtration process.
Storage:	Store at -80°C.
Stability:	Stable for 12 months from the date of receipt of the product under proper storage and handling conditions. Avoid repeated freeze-thaw cycles.
RefSeq:	<u>NP_001001556</u>



[View online »](#)

Locus ID: 2585

UniProt ID: [Q01415](#)

RefSeq Size: 3208

Cytogenetics: 15q21.1-q21.2

RefSeq ORF: 1341

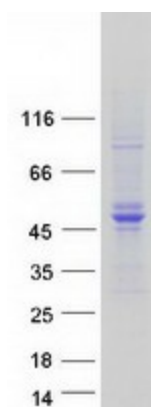
Synonyms: GK2

Summary: This gene encodes a highly efficient N-acetylgalactosamine (GalNAc) kinase, which has galactokinase activity when galactose is present at high concentrations. The encoded protein is a member of the GHMP kinase family. Alternative splicing results in multiple transcript variants. [provided by RefSeq, Jun 2017]

Protein Families: Druggable Genome

Protein Pathways: Amino sugar and nucleotide sugar metabolism, Galactose metabolism, Metabolic pathways

Product images:



Coomassie blue staining of purified GALK2 protein (Cat# [TP316527]). The protein was produced from HEK293T cells transfected with GALK2 cDNA clone (Cat# [RC216527]) using MegaTran 2.0 (Cat# [TT210002]).