

Product datasheet for TP316512M

MSRB3 (NM_198080) Human Recombinant Protein

Product data:

Product Type:	Recombinant Proteins
Description:	Recombinant protein of human methionine sulfoxide reductase B3 (MSRB3), transcript variant 1, 100 µg
Species:	Human
Expression Host:	HEK293T
Expression cDNA Clone or AA Sequence:	>RC216512 representing NM_198080 Red=Cloning site Green=Tags(s)

MSPRRTLPRPLSLCLSLCLCLCLAAALGSAQSGSCRDKKNCKVWFSQQELRKRLTPLQYHVTQEKGTESA
FEGEYTHHKDPGIYKCVVCGTPLFKSETKFDSGSGWPSFHDVINSEAITFTDDFSYGMHRVETSCSQC
HLGHIFDDGPRPTGKRYCINSAALSFTPADSSGTAEGSGVASPAQADKAEL

TRTRPLEQKLISEEDLAANDILDYKDDDDKV

Tag:	C-Myc/DDK
Predicted MW:	20.5 kDa
Concentration:	>0.05 µg/µL as determined by microplate BCA method
Purity:	> 80% as determined by SDS-PAGE and Coomassie blue staining
Buffer:	25 mM Tris-HCl, 100 mM glycine, pH 7.3, 10% glycerol
Preparation:	Recombinant protein was captured through anti-DDK affinity column followed by conventional chromatography steps.
Note:	For testing in cell culture applications, please filter before use. Note that you may experience some loss of protein during the filtration process.
Storage:	Store at -80°C.
Stability:	Stable for 12 months from the date of receipt of the product under proper storage and handling conditions. Avoid repeated freeze-thaw cycles.
RefSeq:	NP_932346
Locus ID:	253827
UniProt ID:	Q8IXL7



[View online »](#)

RefSeq Size: 4242

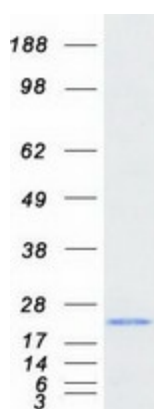
Cytogenetics: 12q14.3

RefSeq ORF: 576

Synonyms: DFNB74

Summary: The protein encoded by this gene catalyzes the reduction of methionine sulfoxide to methionine. This enzyme acts as a monomer and requires zinc as a cofactor. Several transcript variants encoding two different isoforms have been found for this gene. One of the isoforms localizes to mitochondria while the other localizes to endoplasmic reticula. [provided by RefSeq, Jul 2010]

Product images:



Coomassie blue staining of purified MSRB3 protein (Cat# [TP316512]). The protein was produced from HEK293T cells transfected with MSRB3 cDNA clone (Cat# [RC216512]) using MegaTran 2.0 (Cat# [TT210002]).